

# 1 Bedroom + Study

## TYPE A1S

45 sqm / 484 sqft

Inclusive of 5 sqm Balcony

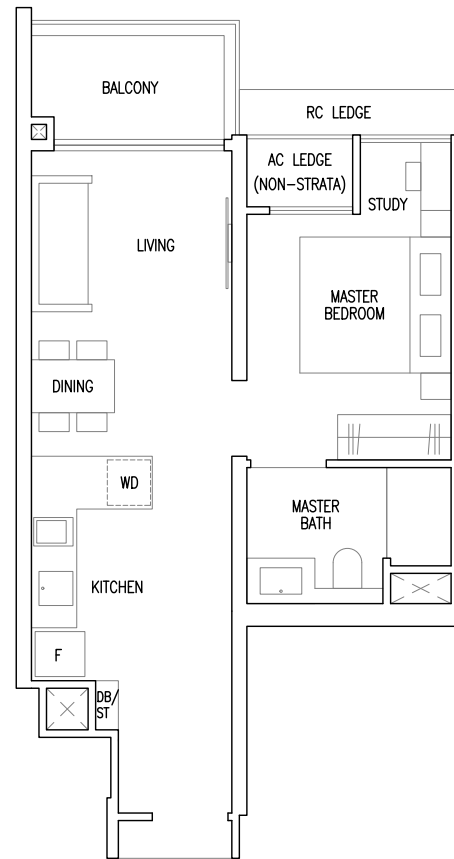
Blk 55 #02-22 to #21-22

Blk 57 #02-30 to #21-30

### MIRROR UNIT

Blk 51 #02-01 to #21-01

Blk 63 #03-35 to #21-35

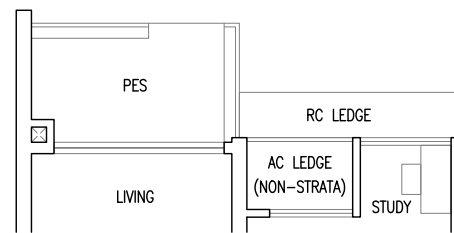


## TYPE A1S(p)

45 sqm / 484 sqft

Inclusive of 5 sqm PES

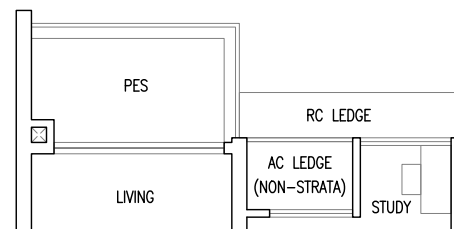
Blk 57 #01-30



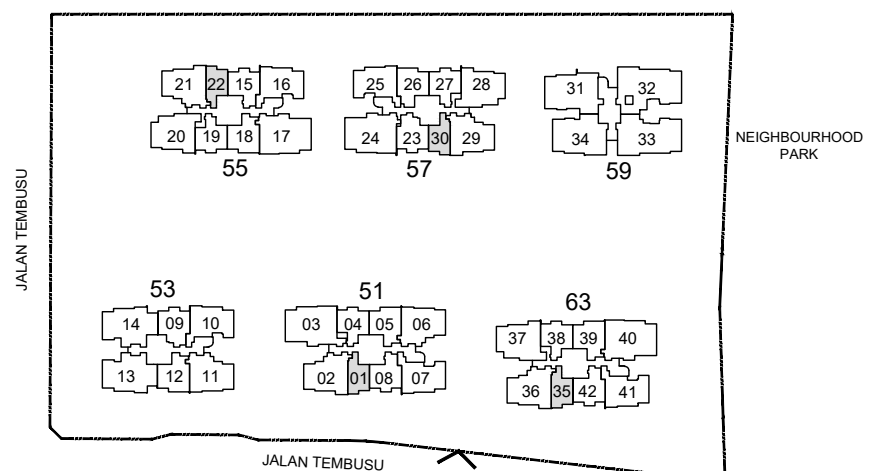
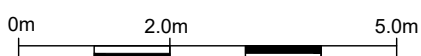
Blk 55 #01-22

### MIRROR UNIT

Blk 51 #01-01



- F : Fridge
- WD : Washer Cum Dryer
- DB/ST : Distribution Board / Storage
- RC Ledge : Reinforced Concrete Ledge (Non-Strata)
- AC Ledge : Air-Conditioner Ledge (Non-Strata)



KEY PLAN  
(NOT TO SCALE)

Area includes balcony and Private Enclosed Space (PES) where applicable. All RC Ledges and AC Ledges are excluded from strata area and are non-load bearing. Some units are mirror images of the floor plans shown in the brochure. Orientations and facings will differ depending on the unit you are purchasing, please refer to the key plan. The above plans and illustrations are subject to changes as may be required or approved by the relevant authorities and do not form part of any offer or contract. Areas are estimates only and are subject to final survey. The balcony & PES shall not be enclosed unless with the approved balcony screen. For an illustration of the approved balcony screen, please refer to Annex A of this brochure.

# 2 Bedroom Premium

## TYPE B1P

58 sqm / 624 sqft

Inclusive of 5 sqm Balcony

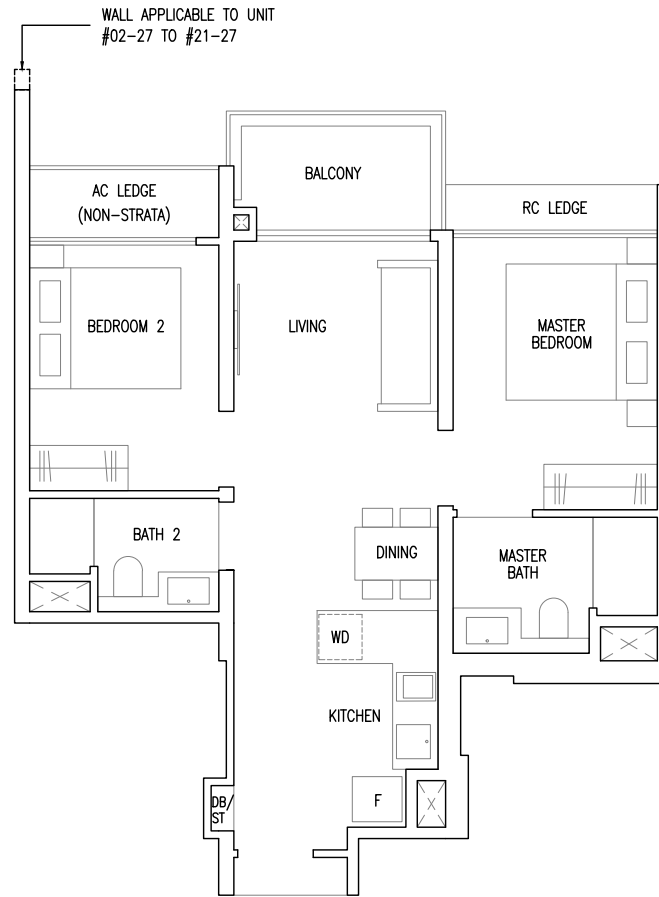
Blk 51 #02-04 to #21-04

Blk 63 #03-38 to #21-38

### MIRROR UNIT

Blk 55 #02-19 to #21-19

Blk 57 #02-27 to #21-27



## TYPE B1P(p)

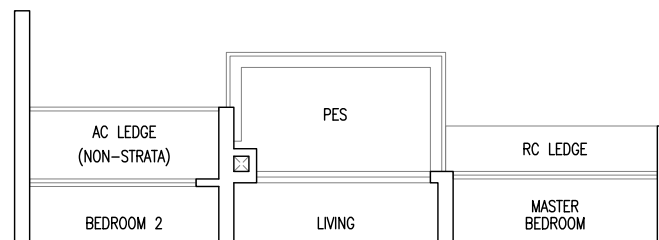
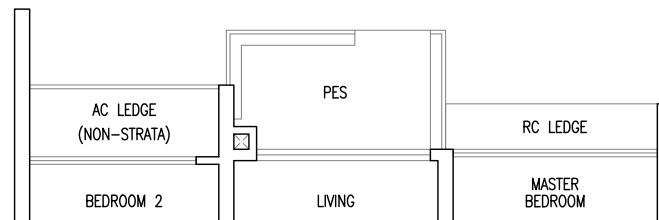
58 sqm / 624 sqft

Inclusive of 5 sqm PES

Blk 51 #01-04

### MIRROR UNIT

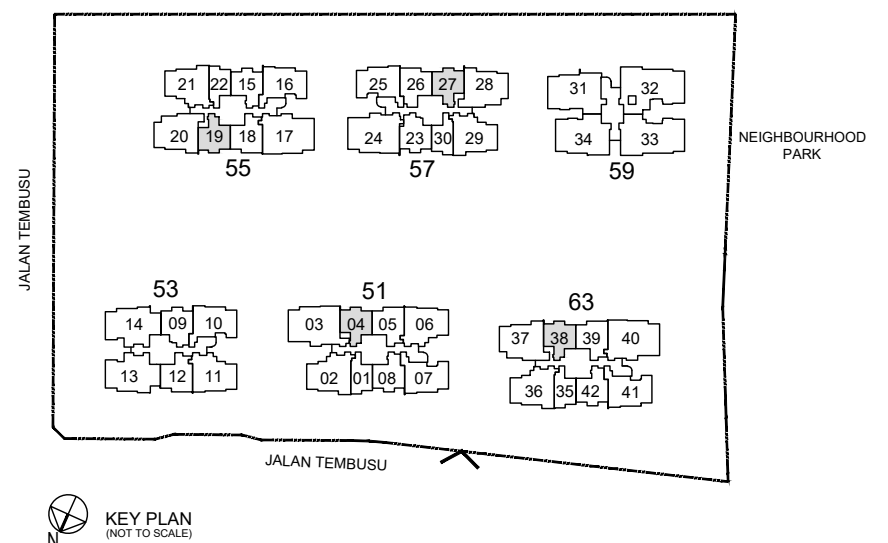
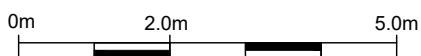
Blk 55 #01-19



### MIRROR UNIT

Blk 57 #01-27

- F : Fridge
- WD : Washer Cum Dryer
- DB/ST : Distribution Board / Storage
- RC Ledge : Reinforced Concrete Ledge (Non-Strata)
- AC Ledge : Air-Conditioner Ledge (Non-Strata)



Area includes balcony and Private Enclosed Space (PES) where applicable. All RC Ledges and AC Ledges are excluded from strata area and are non-load bearing. Some units are mirror images of the floor plans shown in the brochure. Orientations and facings will differ depending on the unit you are purchasing, please refer to the key plan. The above plans and illustrations are subject to changes as may be required or approved by the relevant authorities and do not form part of any offer or contract. Areas are estimates only and are subject to final survey. The balcony & PES shall not be enclosed unless with the approved balcony screen. For an illustration of the approved balcony screen, please refer to Annex A of this brochure.

# 2 Bedroom Premium

## TYPE B2P

60 sqm / 646 sqft

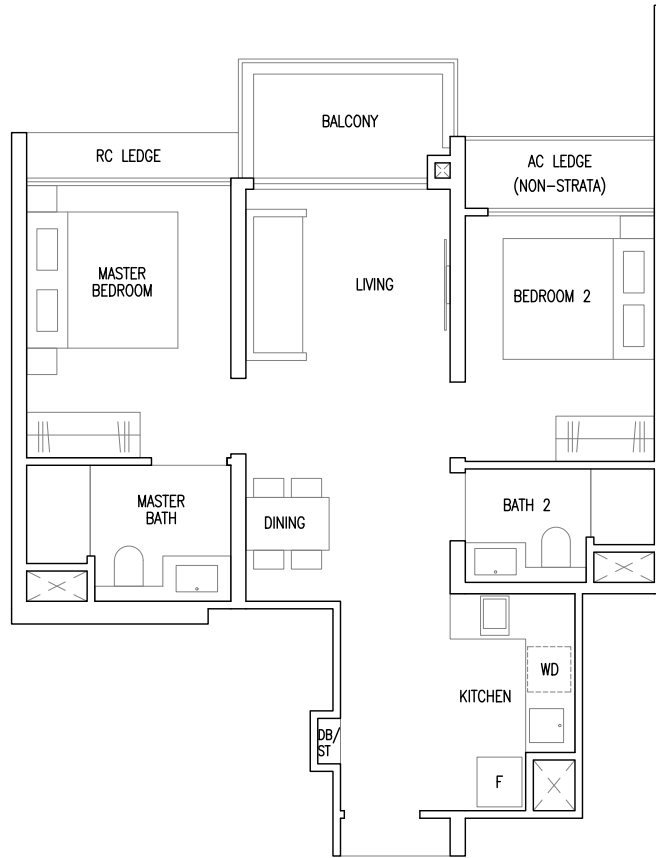
Inclusive of 5 sqm Balcony

Blk 55 #02-15 to #21-15

### MIRROR UNIT

Blk 51 #02-08 to #21-08

Blk 63 #02-42 to #21-42



## TYPE B2P(p)

60 sqm / 646 sqft

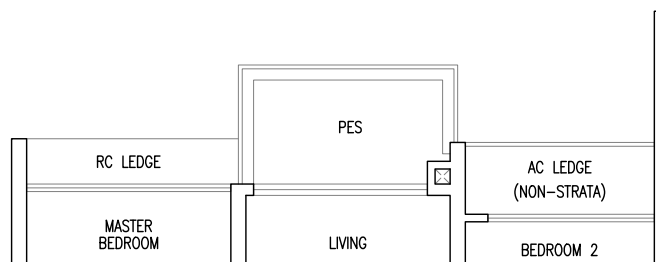
Inclusive of 5 sqm PES

Blk 55 #01-15

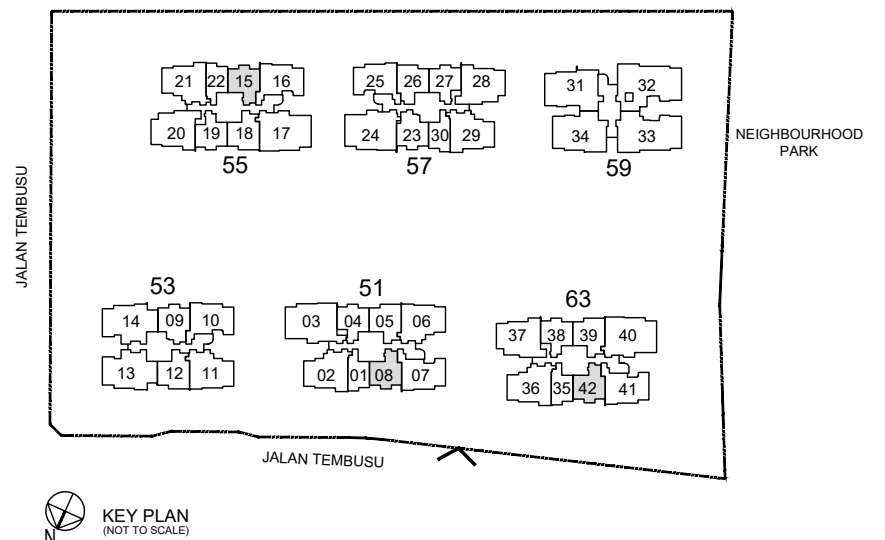
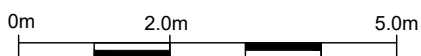
### MIRROR UNIT

Blk 51 #01-08

Blk 63 #01-42



- F : Fridge
- WD : Washer Cum Dryer
- DB/ST : Distribution Board / Storage
- RC Ledge : Reinforced Concrete Ledge (Non-Strata)
- AC Ledge : Air-Conditioner Ledge (Non-Strata)



Area includes balcony and Private Enclosed Space (PES) where applicable. All RC Ledges and AC Ledges are excluded from strata area and are non-load bearing. Some units are mirror images of the floor plans shown in the brochure. Orientations and facings will differ depending on the unit you are purchasing, please refer to the key plan. The above plans and illustrations are subject to changes as may be required or approved by the relevant authorities and do not form part of any offer or contract. Areas are estimates only and are subject to final survey. The balcony & PES shall not be enclosed unless with the approved balcony screen. For an illustration of the approved balcony screen, please refer to Annex A of this brochure.

# 2 Bedroom + Study

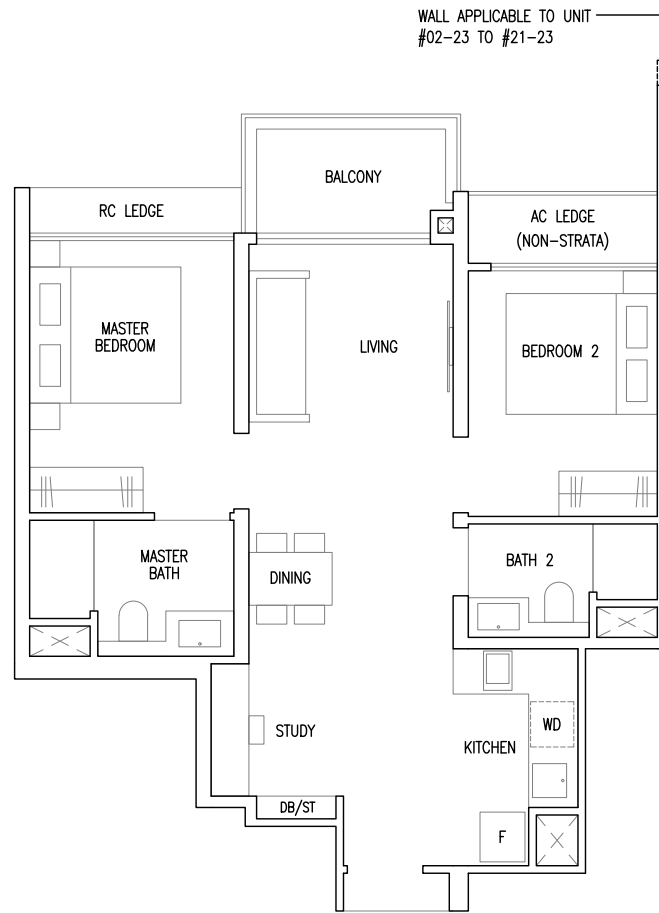
## TYPE B3S

63 sqm / 678 sqft

Inclusive of 5 sqm Balcony

Blk 53 #02-09 to #19-09

Blk 57 #02-23 to #21-23



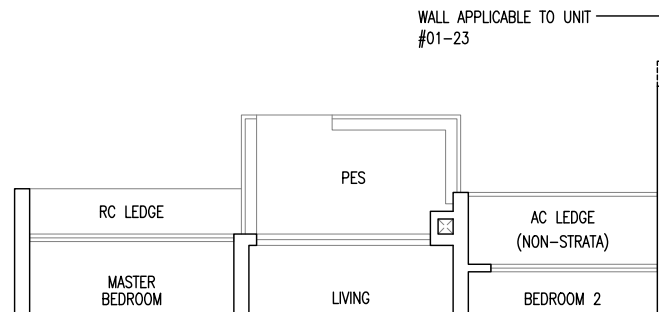
## TYPE B3S(p)

63 sqm / 678 sqft

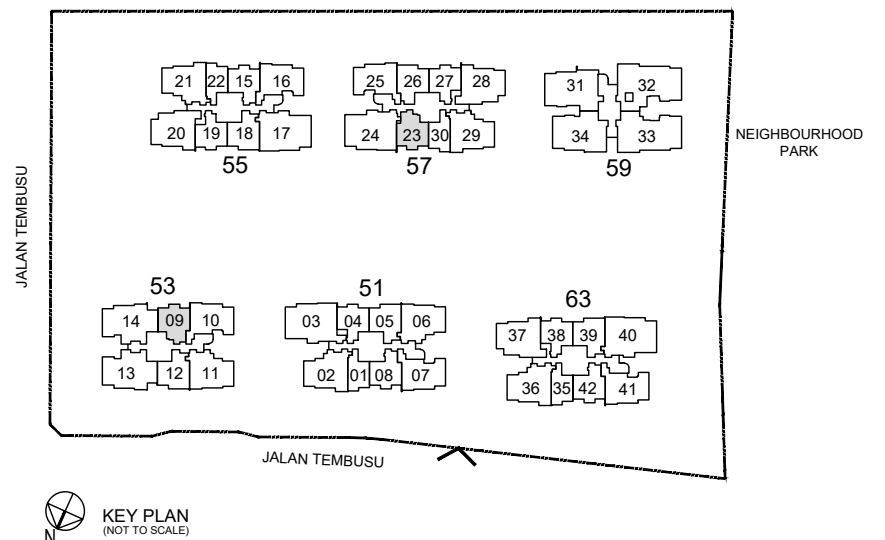
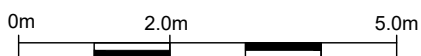
Inclusive of 5 sqm PES

Blk 53 #01-09

Blk 57 #01-23



- F : Fridge
- WD : Washer Cum Dryer
- DB/ST : Distribution Board / Storage
- RC Ledge : Reinforced Concrete Ledge (Non-Strata)
- AC Ledge : Air-Conditioner Ledge (Non-Strata)



Area includes balcony and Private Enclosed Space (PES) where applicable. All RC Ledges and AC Ledges are excluded from strata area and are non-load bearing. Some units are mirror images of the floor plans shown in the brochure. Orientations and facings will differ depending on the unit you are purchasing, please refer to the key plan. The above plans and illustrations are subject to changes as may be required or approved by the relevant authorities and do not form part of any offer or contract. Areas are estimates only and are subject to final survey. The balcony & PES shall not be enclosed unless with the approved balcony screen. For an illustration of the approved balcony screen, please refer to Annex A of this brochure.

# 2 Bedroom + Study

## TYPE B4S

64 sqm / 689 sqft

Inclusive of 5 sqm Balcony

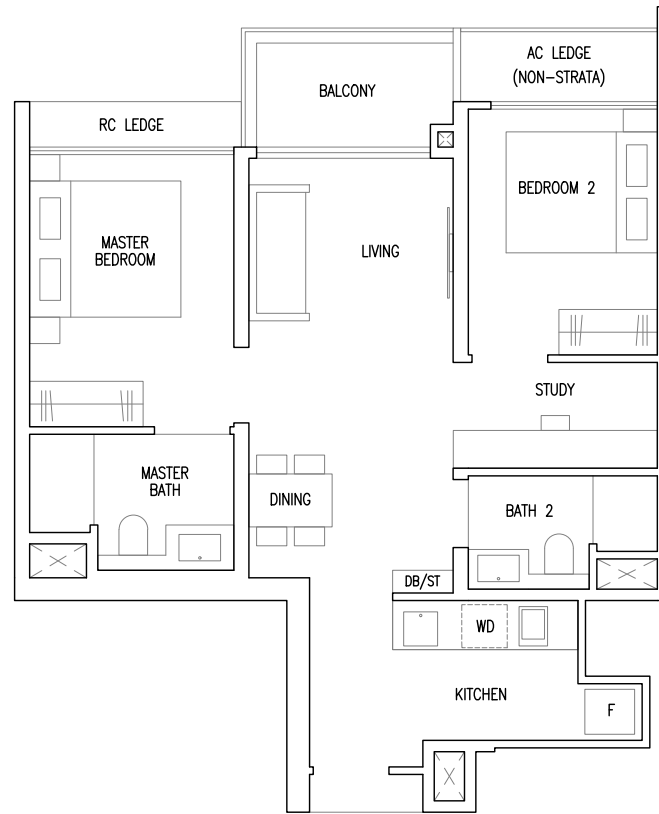
Blk 51 #02-05 to #21-05

Blk 63 #02-39 to #21-39

### MIRROR UNIT

Blk 53 #02-12 to #19-12

Blk 55 #02-18 to #21-18



## TYPE B4S(p)

64 sqm / 689 sqft

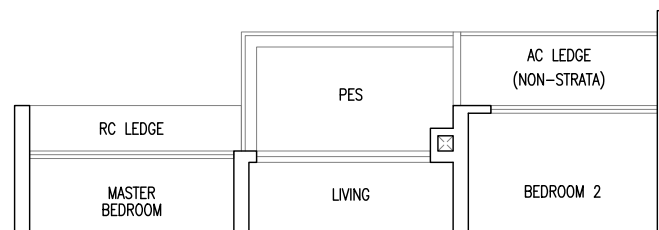
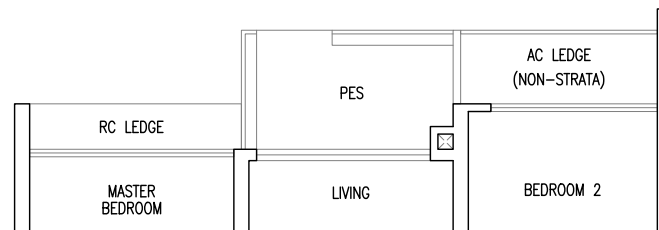
Inclusive of 5 sqm PES

Blk 51 #01-05

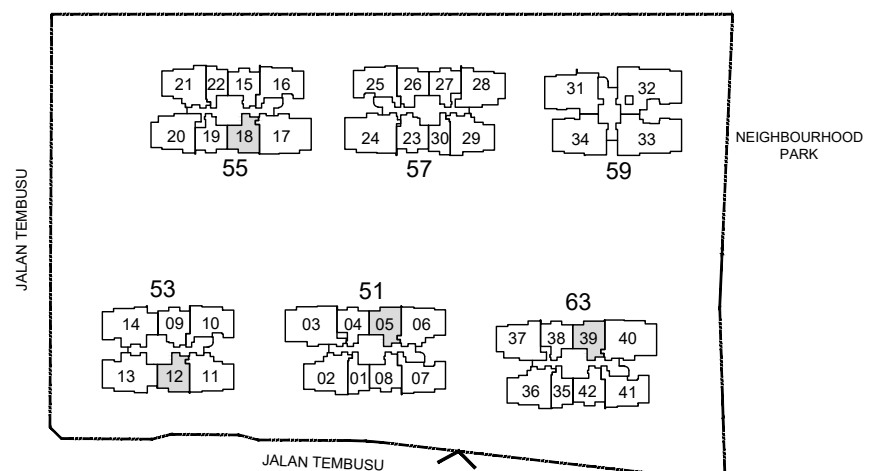
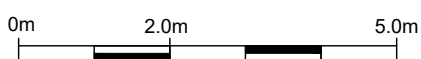
Blk 63 #01-39

### MIRROR UNIT

Blk 55 #01-18



- F : Fridge
- WD : Washer Cum Dryer
- DB/ST : Distribution Board / Storage
- RC Ledge : Reinforced Concrete Ledge (Non-Strata)
- AC Ledge : Air-Conditioner Ledge (Non-Strata)



KEY PLAN  
(NOT TO SCALE)

Area includes balcony and Private Enclosed Space (PES) where applicable. All RC Ledges and AC Ledges are excluded from strata area and are non-load bearing. Some units are mirror images of the floor plans shown in the brochure. Orientations and facings will differ depending on the unit you are purchasing, please refer to the key plan. The above plans and illustrations are subject to changes as may be required or approved by the relevant authorities and do not form part of any offer or contract. Areas are estimates only and are subject to final survey. The balcony & PES shall not be enclosed unless with the approved balcony screen. For an illustration of the approved balcony screen, please refer to Annex A of this brochure.

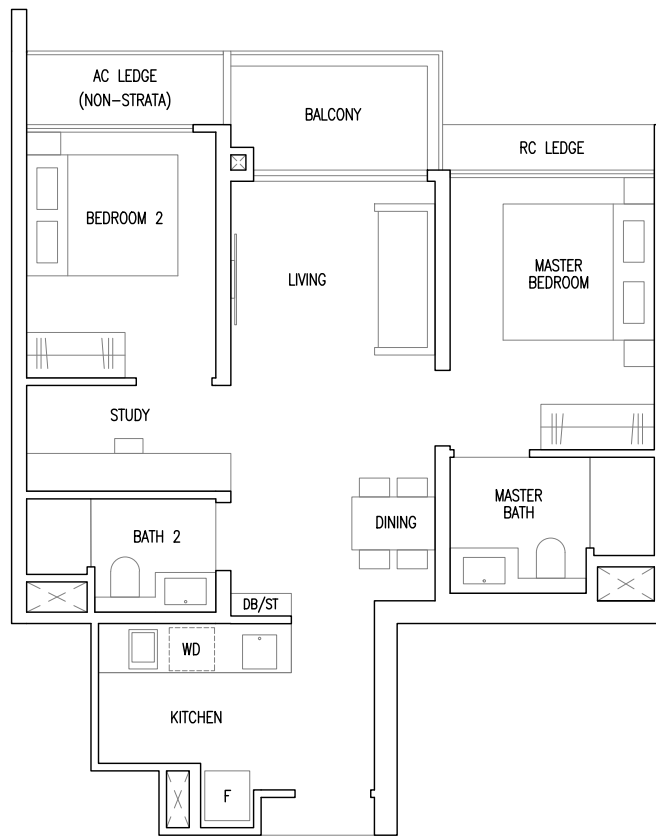
# 2 Bedroom + Study

## TYPE B5S

65 sqm / 700 sqft

Inclusive of 5 sqm Balcony

Blk 57 #02-26 to #21-26

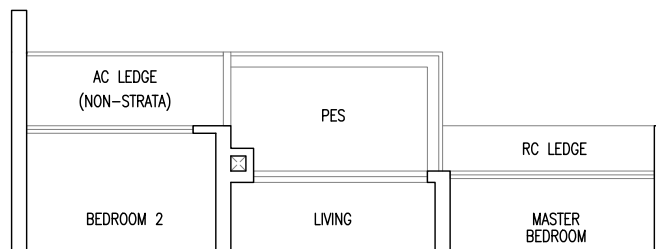


## TYPE B5S(p)

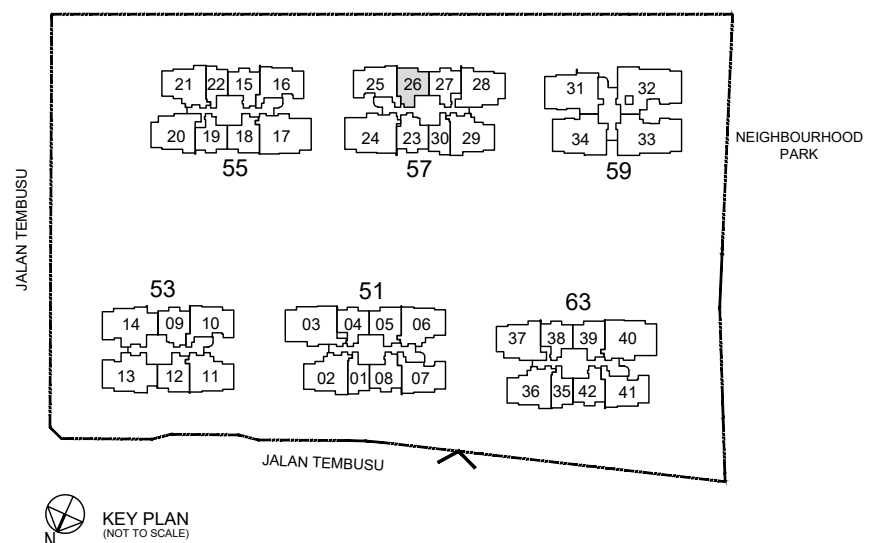
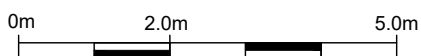
65 sqm / 700 sqft

Inclusive of 5 sqm PES

Blk 57 #01-26



- F : Fridge
- WD : Washer Cum Dryer
- DB/ST : Distribution Board / Storage
- RC Ledge : Reinforced Concrete Ledge (Non-Strata)
- AC Ledge : Air-Conditioner Ledge (Non-Strata)



Area includes balcony and Private Enclosed Space (PES) where applicable. All RC Ledges and AC Ledges are excluded from strata area and are non-load bearing. Some units are mirror images of the floor plans shown in the brochure. Orientations and facings will differ depending on the unit you are purchasing, please refer to the key plan. The above plans and illustrations are subject to changes as may be required or approved by the relevant authorities and do not form part of any offer or contract. Areas are estimates only and are subject to final survey. The balcony & PES shall not be enclosed unless with the approved balcony screen. For an illustration of the approved balcony screen, please refer to Annex A of this brochure.

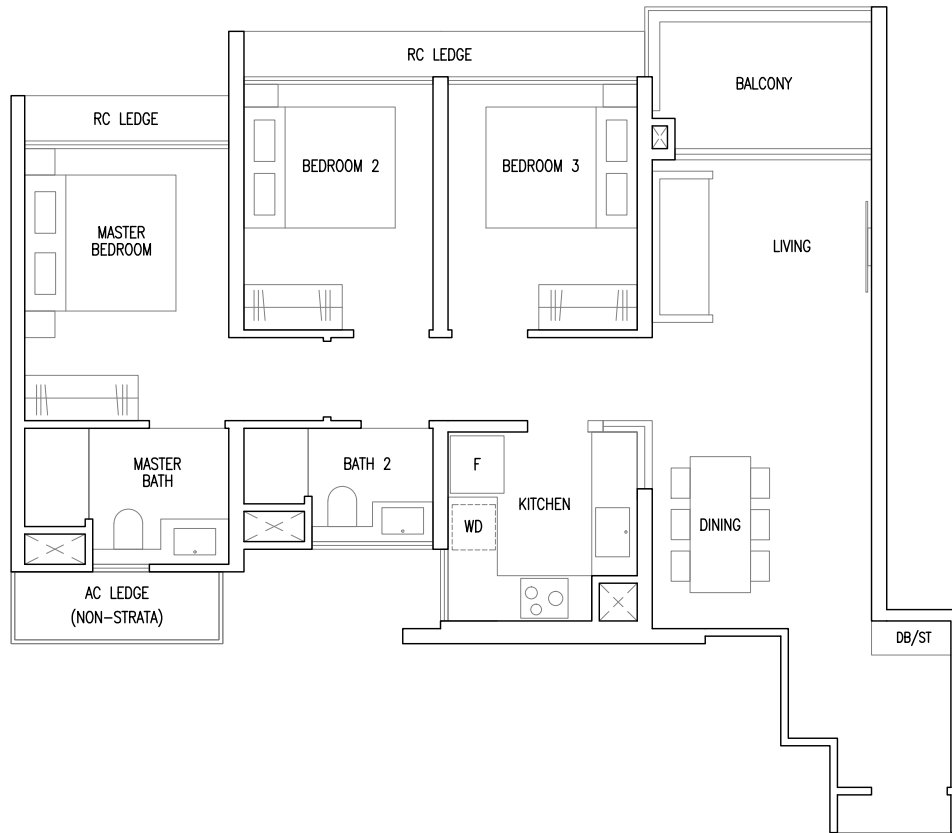
# 3 Bedroom

## TYPE C1

82 sqm / 883 sqft

Inclusive of 6 sqm Balcony

Blk 57 #02-25 to #21-25

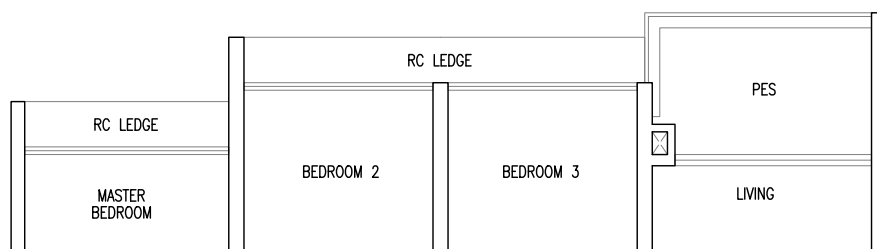


## TYPE C1(p)

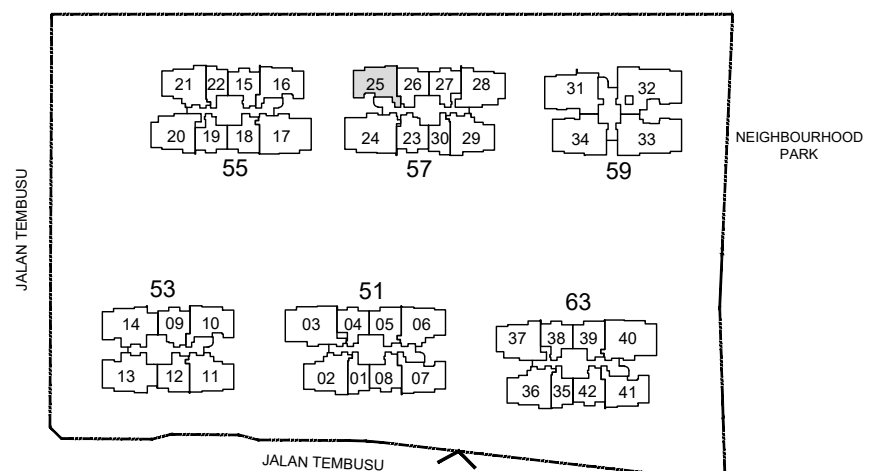
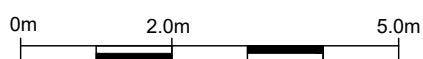
82 sqm / 883 sqft

Inclusive of 6 sqm PES

Blk 57 #01-25



- F : Fridge
- WD : Washer Cum Dryer
- DB/ST : Distribution Board / Storage
- RC Ledge : Reinforced Concrete Ledge (Non-Strata)
- AC Ledge : Air-Conditioner Ledge (Non-Strata)



KEY PLAN  
(NOT TO SCALE)

Area includes balcony and Private Enclosed Space (PES) where applicable. All RC Ledges and AC Ledges are excluded from strata area and are non-load bearing. Some units are mirror images of the floor plans shown in the brochure. Orientations and facings will differ depending on the unit you are purchasing, please refer to the key plan. The above plans and illustrations are subject to changes as may be required or approved by the relevant authorities and do not form part of any offer or contract. Areas are estimates only and are subject to final survey. The balcony & PES shall not be enclosed unless with the approved balcony screen. For an illustration of the approved balcony screen, please refer to Annex A of this brochure.

# 3 Bedroom

## TYPE C2

84 sqm / 904 sqft

Inclusive of 6 sqm Balcony

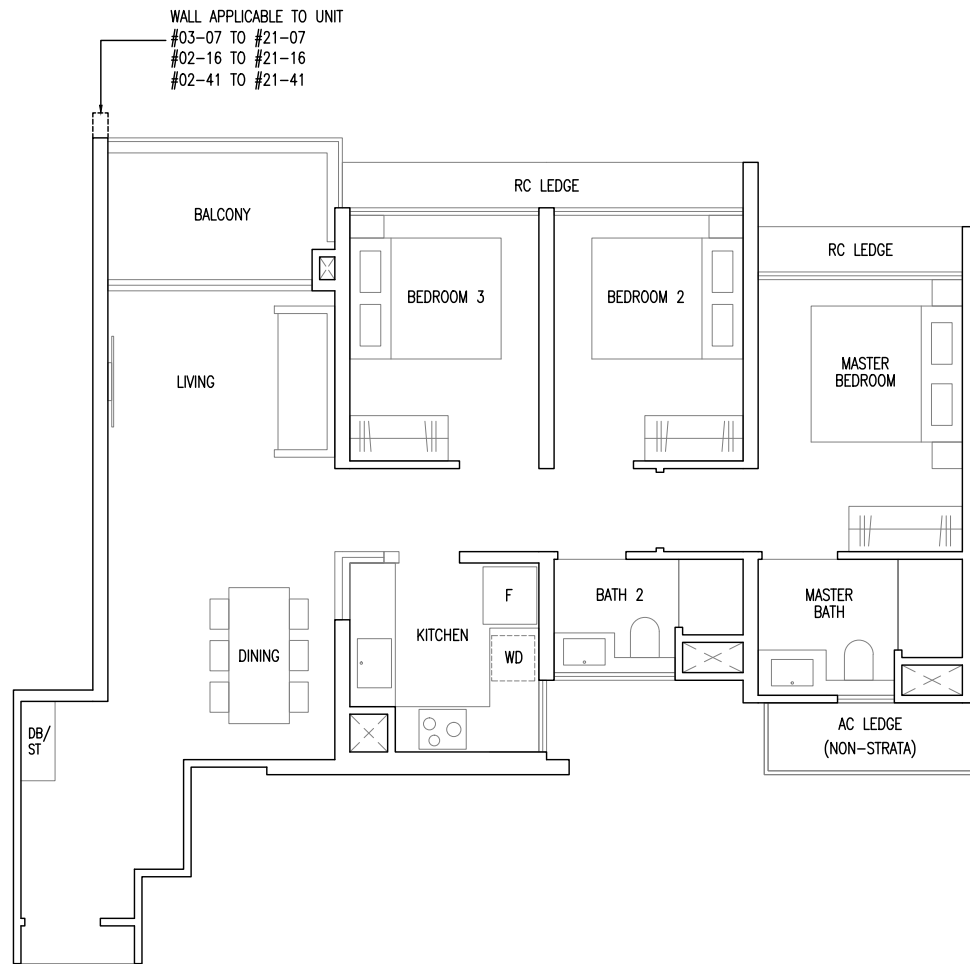
Blk 53 #02-10 to #19-10

Blk 55 #02-16 to #21-16

### MIRROR UNIT

Blk 51 #03-07 to #21-07

Blk 63 #02-41 to #21-41

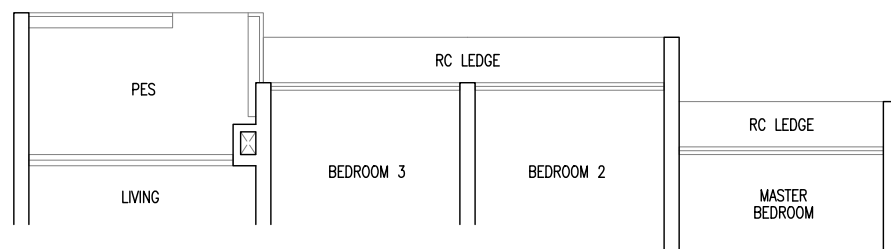


## TYPE C2(p)

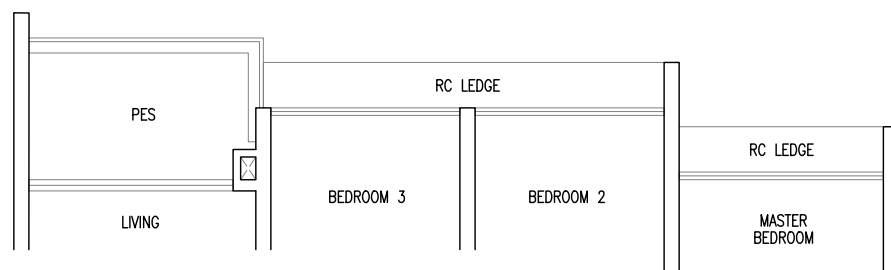
84 sqm / 904 sqft

Inclusive of 6 sqm PES

Blk 53 #01-10



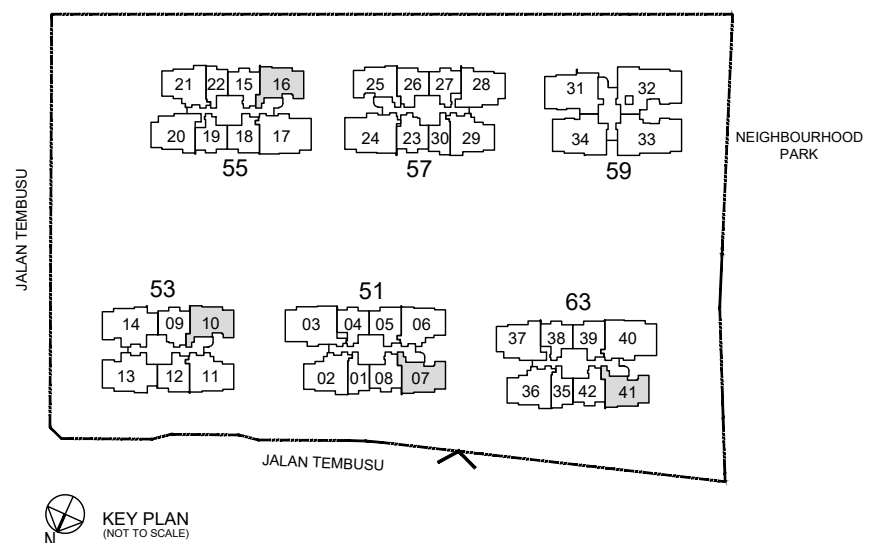
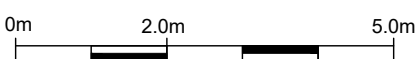
Blk 55 #01-16



### MIRROR UNIT

Blk 63 #01-41

- F : Fridge
- WD : Washer Cum Dryer
- DB/ST : Distribution Board / Storage
- RC Ledge : Reinforced Concrete Ledge (Non-Strata)
- AC Ledge : Air-Conditioner Ledge (Non-Strata)



Area includes balcony and Private Enclosed Space (PES) where applicable. All RC Ledges and AC Ledges are excluded from strata area and are non-load bearing. Some units are mirror images of the floor plans shown in the brochure. Orientations and facings will differ depending on the unit you are purchasing, please refer to the key plan. The above plans and illustrations are subject to changes as may be required or approved by the relevant authorities and do not form part of any offer or contract. Areas are estimates only and are subject to final survey. The balcony & PES shall not be enclosed unless with the approved balcony screen. For an illustration of the approved balcony screen, please refer to Annex A of this brochure.



# 3 Bedroom + Study

## TYPE C3S

90 sqm / 969 sqft

Inclusive of 6 sqm Balcony

Blk 51 #03-06 to #21-06

MIRROR UNIT

Blk 53 #02-11 to #19-11



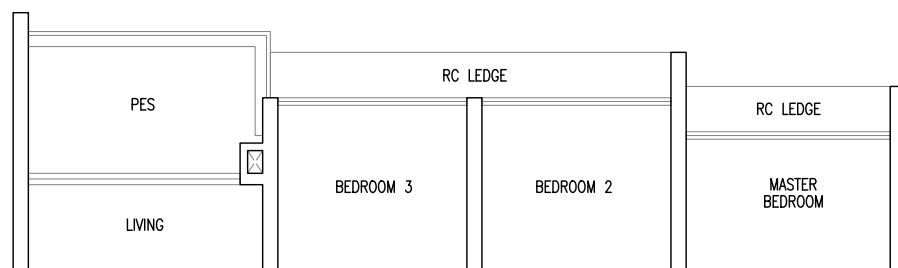
## TYPE C3S(p)

90 sqm / 969 sqft

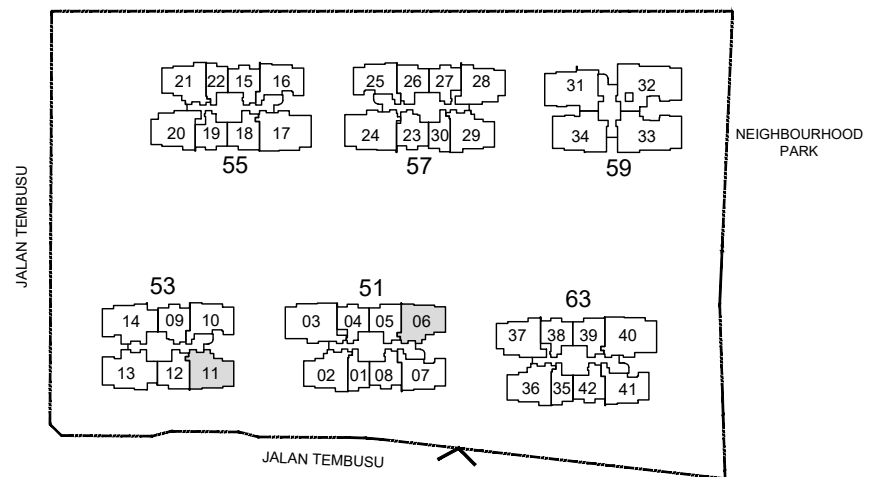
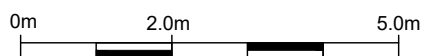
Inclusive of 6 sqm PES

MIRROR UNIT

Blk 53 #01-11



- F : Fridge
- WD : Washer Cum Dryer
- DB : Distribution Board
- RC Ledge : Reinforced Concrete Ledge (Non-Strata)
- AC Ledge : Air-Conditioner Ledge (Non-Strata)



KEY PLAN  
(NOT TO SCALE)

Area includes balcony and Private Enclosed Space (PES) where applicable. All RC Ledges and AC Ledges are excluded from strata area and are non-load bearing. Some units are mirror images of the floor plans shown in the brochure. Orientations and facings will differ depending on the unit you are purchasing, please refer to the key plan. The above plans and illustrations are subject to changes as may be required or approved by the relevant authorities and do not form part of any offer or contract. Areas are estimates only and are subject to final survey. The balcony & PES shall not be enclosed unless with the approved balcony screen. For an illustration of the approved balcony screen, please refer to Annex A of this brochure.

# 3 Bedroom + Study

## TYPE C4S

92 sqm / 990 sqft

Inclusive of 6 sqm Balcony

Blk 51 #02-02 to #21-02

Blk 63 #03-36 to #21-36

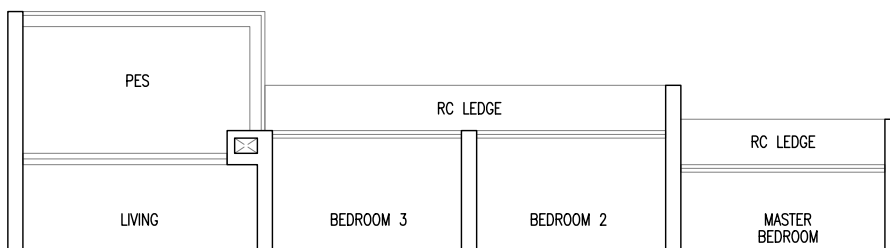


## TYPE C4S(p)

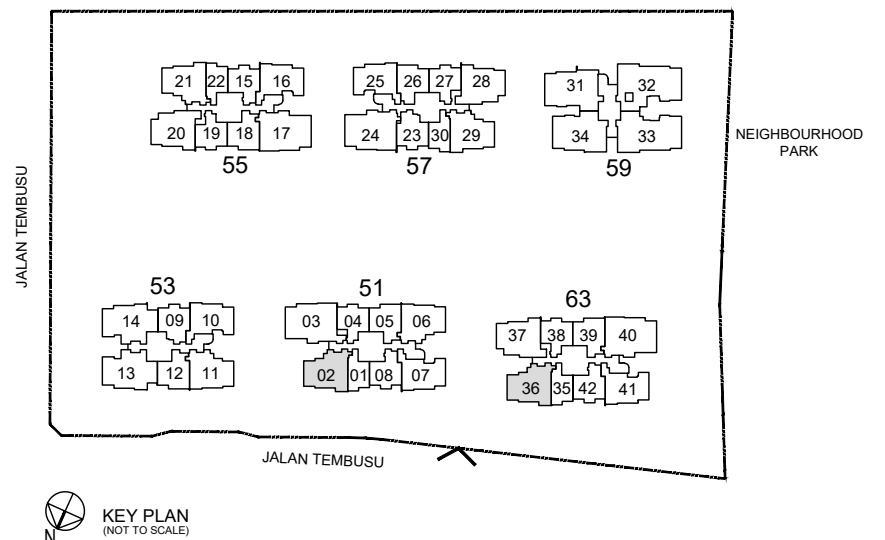
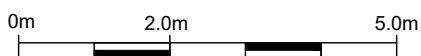
92 sqm / 990 sqft

Inclusive of 6 sqm PES

Blk 51 #01-02



- F : Fridge
- WD : Washer Cum Dryer
- DB : Distribution Board
- RC Ledge : Reinforced Concrete Ledge (Non-Strata)
- AC Ledge : Air-Conditioner Ledge (Non-Strata)



KEY PLAN  
(NOT TO SCALE)

Area includes balcony and Private Enclosed Space (PES) where applicable. All RC Ledges and AC Ledges are excluded from strata area and are non-load bearing. Some units are mirror images of the floor plans shown in the brochure. Orientations and facings will differ depending on the unit you are purchasing, please refer to the key plan. The above plans and illustrations are subject to changes as may be required or approved by the relevant authorities and do not form part of any offer or contract. Areas are estimates only and are subject to final survey. The balcony & PES shall not be enclosed unless with the approved balcony screen. For an illustration of the approved balcony screen, please refer to Annex A of this brochure.

# 3 Bedroom Flexi

## TYPE C5F

92 sqm / 990 sqft

Inclusive of 6 sqm Balcony

Blk 55 #02-21 to #21-21

Blk 57 #02-29 to #21-29

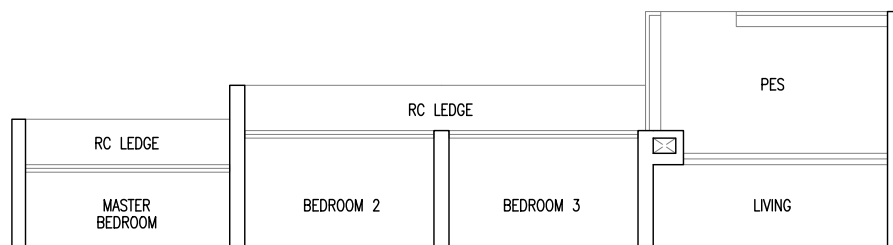


## TYPE C5F(p)

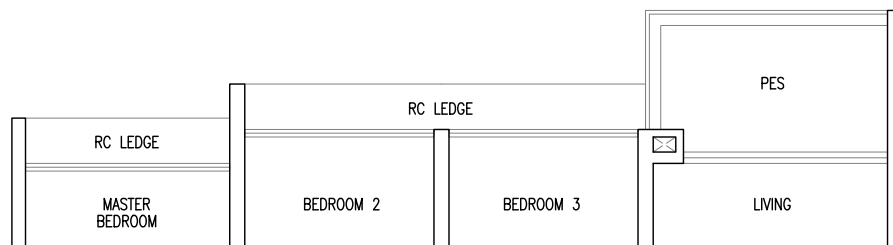
92 sqm / 990 sqft

Inclusive of 6 sqm PES

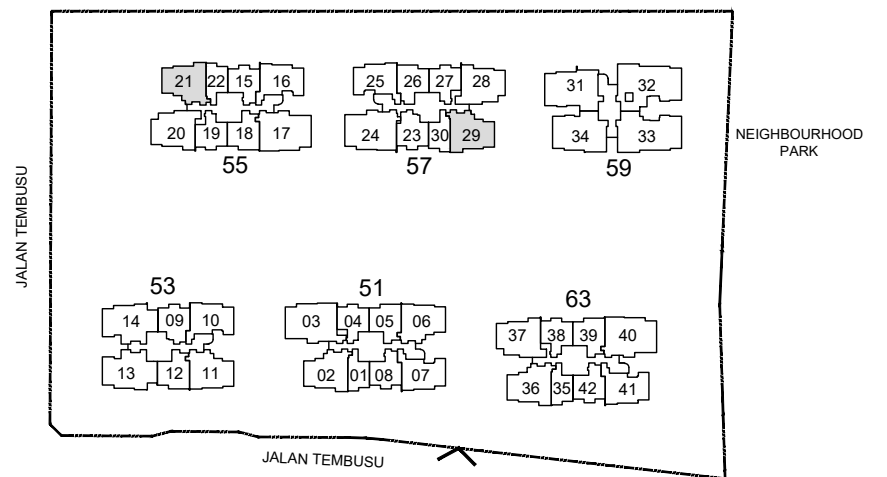
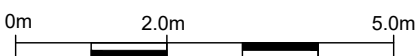
Blk 57 #01-29



Blk 55 #01-21



- F : Fridge
- WD : Washer Cum Dryer
- DB : Distribution Board
- RC Ledge : Reinforced Concrete Ledge (Non-Strata)
- AC Ledge : Air-Conditioner Ledge (Non-Strata)



KEY PLAN  
(NOT TO SCALE)

Area includes balcony and Private Enclosed Space (PES) where applicable. All RC Ledges and AC Ledges are excluded from strata area and are non-load bearing. Some units are mirror images of the floor plans shown in the brochure. Orientations and facings will differ depending on the unit you are purchasing, please refer to the key plan. The above plans and illustrations are subject to changes as may be required or approved by the relevant authorities and do not form part of any offer or contract. Areas are estimates only and are subject to final survey. The balcony & PES shall not be enclosed unless with the approved balcony screen. For an illustration of the approved balcony screen, please refer to Annex A of this brochure.

# 3 Bedroom + Study

## TYPE C6S

95 sqm / 1023 sqft

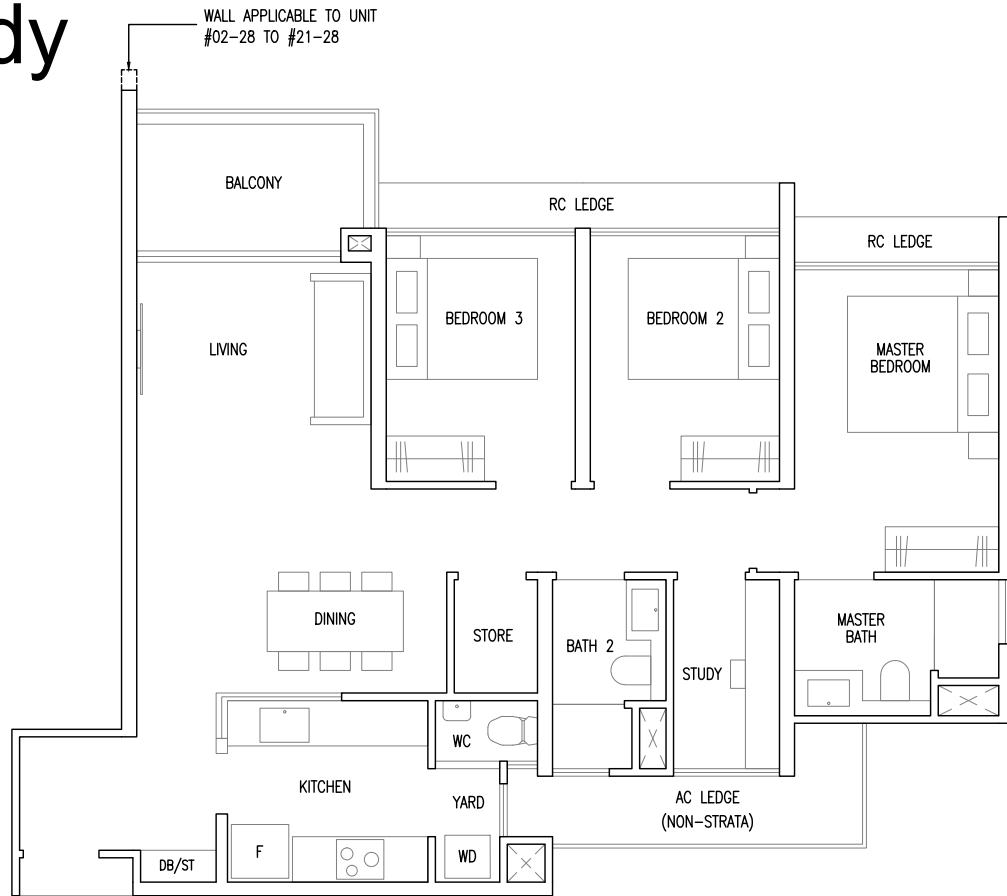
Inclusive of 6 sqm Balcony

Blk 55 #02-20 to #21-20

Blk 57 #02-28 to #21-28

MIRROR UNIT

Blk 63 #03-37 to #21-37

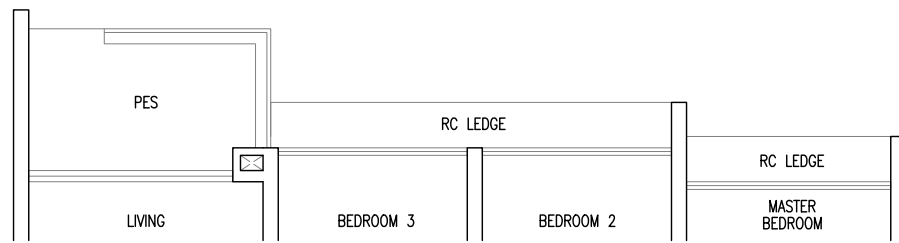


## TYPE C6S(p)

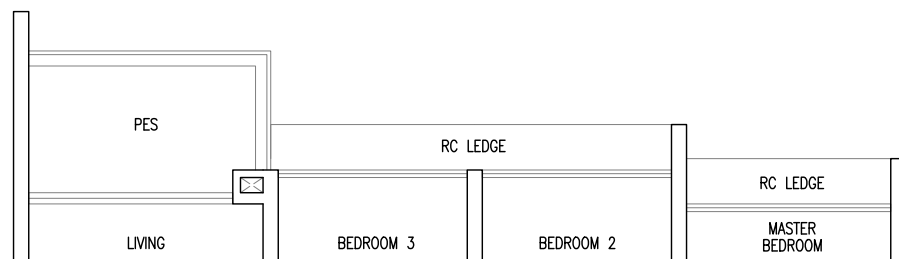
95 sqm / 1023 sqft

Inclusive of 6 sqm PES

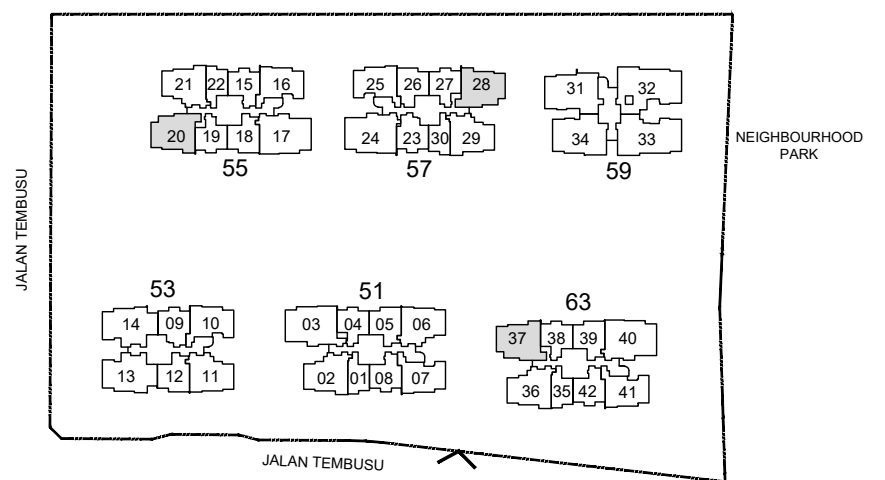
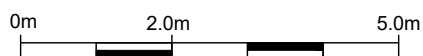
Blk 55 #01-20



Blk 57 #01-28



- F : Fridge
- WD : Washer Cum Dryer
- DB/ST : Distribution Board / Storage
- RC Ledge : Reinforced Concrete Ledge (Non-Strata)
- AC Ledge : Air-Conditioner Ledge (Non-Strata)



KEY PLAN  
(NOT TO SCALE)

Area includes balcony and Private Enclosed Space (PES) where applicable. All RC Ledges and AC Ledges are excluded from strata area and are non-load bearing. Some units are mirror images of the floor plans shown in the brochure. Orientations and facings will differ depending on the unit you are purchasing, please refer to the key plan. The above plans and illustrations are subject to changes as may be required or approved by the relevant authorities and do not form part of any offer or contract. Areas are estimates only and are subject to final survey. The balcony & PES shall not be enclosed unless with the approved balcony screen. For an illustration of the approved balcony screen, please refer to Annex A of this brochure.

# 4 Bedroom + Study

## TYPE D1S

107 sqm / 1152 sqft

Inclusive of 6 sqm Balcony

Blk 53 #02-13 to #19-13

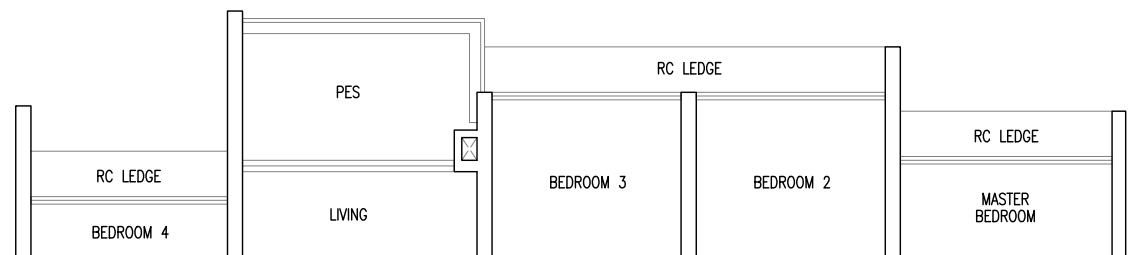


## TYPE D1S(p)

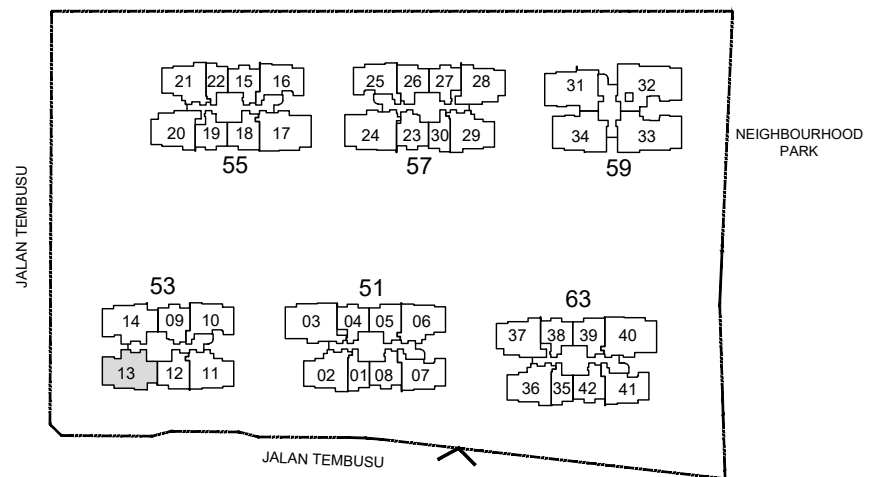
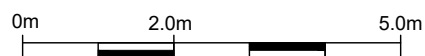
107 sqm / 1152 sqft

Inclusive of 6 sqm PES

Blk 53 #01-13



- F : Fridge
- WD : Washer Cum Dryer
- DB : Distribution Board
- RC Ledge : Reinforced Concrete Ledge (Non-Strata)
- AC Ledge : Air-Conditioner Ledge (Non-Strata)



KEY PLAN  
(NOT TO SCALE)

Area includes balcony and Private Enclosed Space (PES) where applicable. All RC Ledges and AC Ledges are excluded from strata area and are non-load bearing. Some units are mirror images of the floor plans shown in the brochure. Orientations and facings will differ depending on the unit you are purchasing, please refer to the key plan. The above plans and illustrations are subject to changes as may be required or approved by the relevant authorities and do not form part of any offer or contract. Areas are estimates only and are subject to final survey. The balcony & PES shall not be enclosed unless with the approved balcony screen. For an illustration of the approved balcony screen, please refer to Annex A of this brochure.

# 4 Bedroom + Study

## TYPE D2S

107 sqm / 1152 sqft

Inclusive of 6 sqm Balcony

Blk 53 #02-14 to #19-14

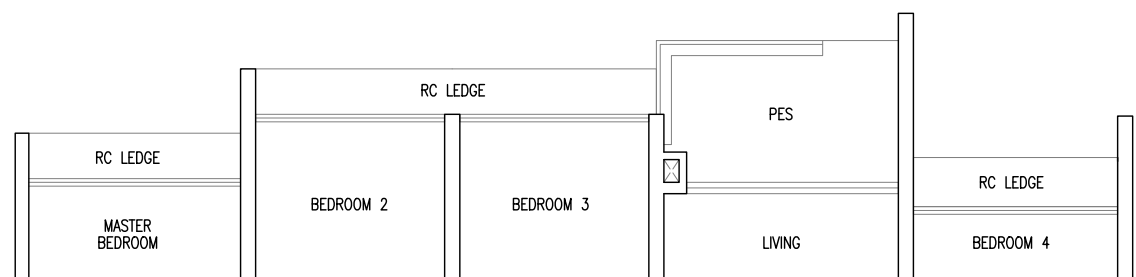


## TYPE D2S(p)

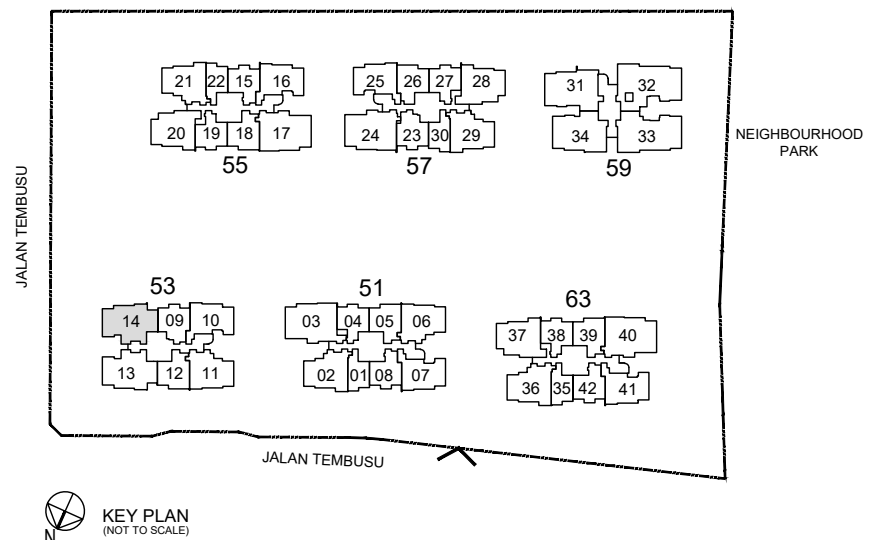
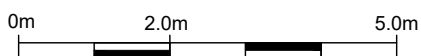
107 sqm / 1152 sqft

Inclusive of 6 sqm PES

Blk 53 #01-14



- F : Fridge
- WD : Washer Cum Dryer
- DB : Distribution Board
- RC Ledge : Reinforced Concrete Ledge (Non-Strata)
- AC Ledge : Air-Conditioner Ledge (Non-Strata)



Area includes balcony and Private Enclosed Space (PES) where applicable. All RC Ledges and AC Ledges are excluded from strata area and are non-load bearing. Some units are mirror images of the floor plans shown in the brochure. Orientations and facings will differ depending on the unit you are purchasing, please refer to the key plan. The above plans and illustrations are subject to changes as may be required or approved by the relevant authorities and do not form part of any offer or contract. Areas are estimates only and are subject to final survey. The balcony & PES shall not be enclosed unless with the approved balcony screen. For an illustration of the approved balcony screen, please refer to Annex A of this brochure.

# 4 Bedroom Premium

## TYPE D3P

117 sqm / 1259 sqft

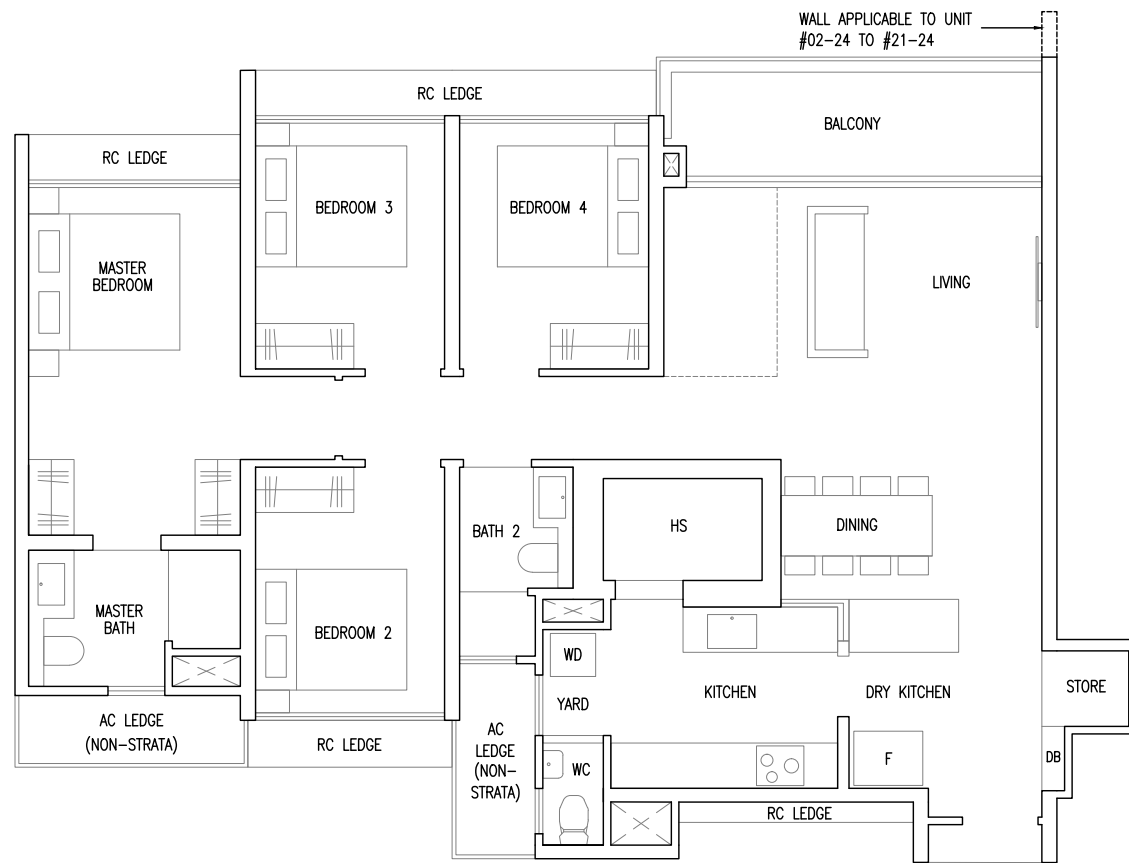
Inclusive of 8 sqm Balcony

Blk 55 #02-17 to #21-17

### MIRROR UNIT

Blk 57 #02-24 to #21-24

Blk 63 #02-40 to #21-40



## TYPE D3P(p)

117 sqm / 1259 sqft

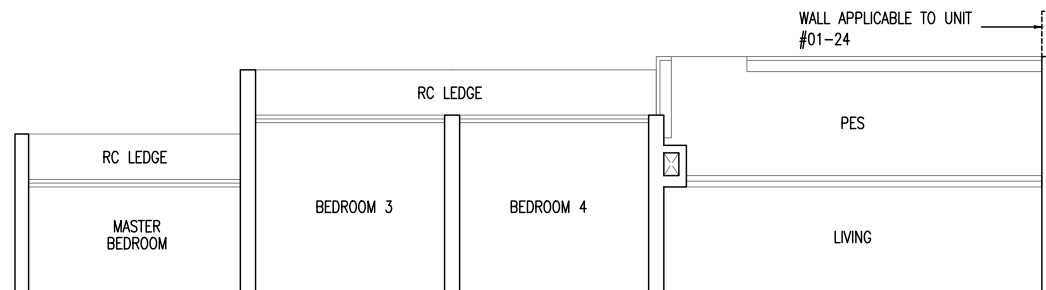
Inclusive of 8 sqm PES

Blk 55 #01-17

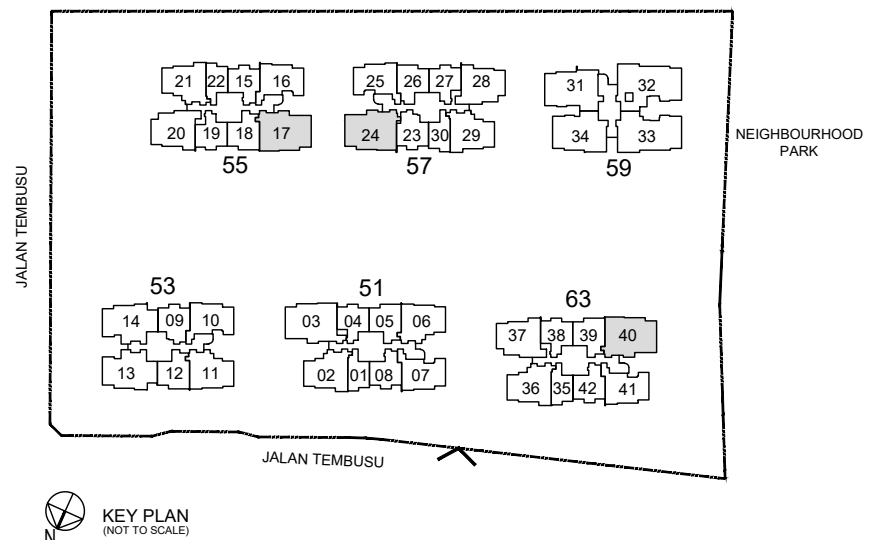
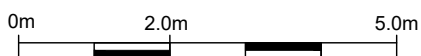
### MIRROR UNIT

Blk 57 #01-24

Blk 63 #01-40



- F : Fridge
- WD : Washer Cum Dryer
- HS : Household Shelter
- DB : Distribution Board
- RC Ledge : Reinforced Concrete Ledge (Non-Strata)
- AC Ledge : Air-Conditioner Ledge (Non-Strata)



Area includes balcony and Private Enclosed Space (PES) where applicable. All RC Ledges and AC Ledges are excluded from strata area and are non-load bearing. Some units are mirror images of the floor plans shown in the brochure. Orientations and facings will differ depending on the unit you are purchasing, please refer to the key plan. The above plans and illustrations are subject to changes as may be required or approved by the relevant authorities and do not form part of any offer or contract. Areas are estimates only and are subject to final survey. The balcony & PES shall not be enclosed unless with the approved balcony screen. For an illustration of the approved balcony screen, please refer to Annex A of this brochure.

# 4 Bedroom Premium

## TYPE D4P

118 sqm / 1270 sqft

Inclusive of 8 sqm Balcony

Blk 51 #02-03 to #21-03

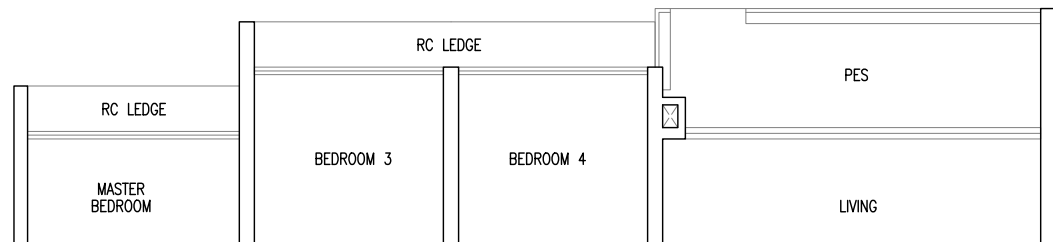


## TYPE D4P(p)

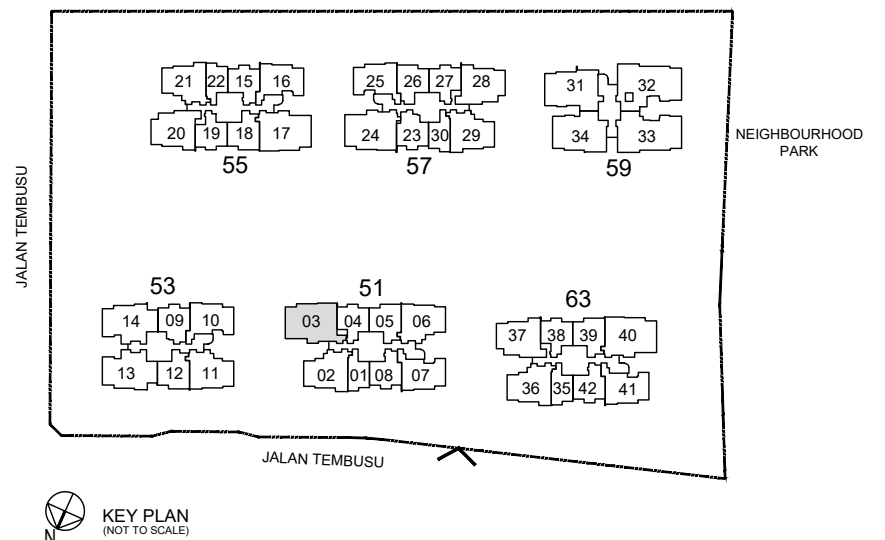
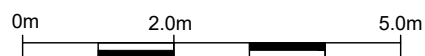
118 sqm / 1270 sqft

Inclusive of 8 sqm PES

Blk 51 #01-03



- F : Fridge
- WD : Washer Cum Dryer
- HS : Household Shelter
- DB : Distribution Board
- RC Ledge : Reinforced Concrete Ledge (Non-Strata)
- AC Ledge : Air-Conditioner Ledge (Non-Strata)



Area includes balcony and Private Enclosed Space (PES) where applicable. All RC Ledges and AC Ledges are excluded from strata area and are non-load bearing. Some units are mirror images of the floor plans shown in the brochure. Orientations and facings will differ depending on the unit you are purchasing, please refer to the key plan. The above plans and illustrations are subject to changes as may be required or approved by the relevant authorities and do not form part of any offer or contract. Areas are estimates only and are subject to final survey. The balcony & PES shall not be enclosed unless with the approved balcony screen. For an illustration of the approved balcony screen, please refer to Annex A of this brochure.



# 4 Bedroom Luxe + Study

## TYPE D5LS

121 sqm / 1302 sqft

Inclusive of 10 sqm Balcony

Blk 59 #02-34 to #17-34

## TYPE D5LS(H)

121 sqm / 1302 sqft

Inclusive of 10 sqm Balcony

(High ceiling of 5 metres over living / dining)

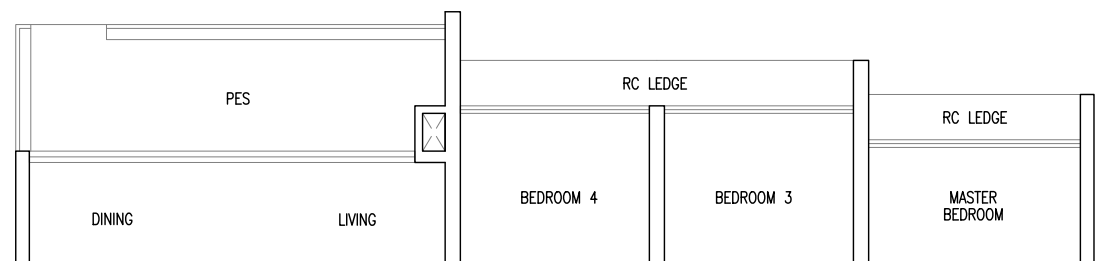
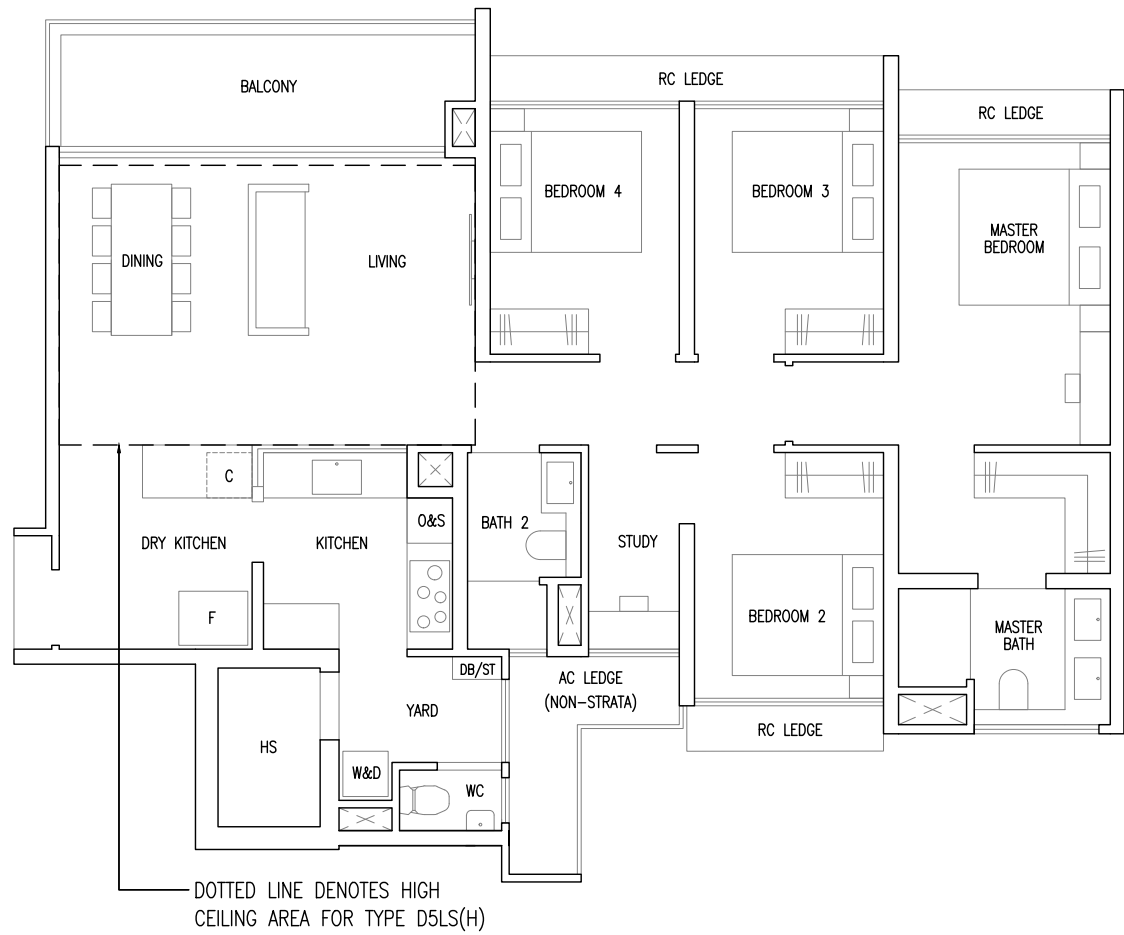
Blk 59 #18-34

## TYPE D5LS(p)

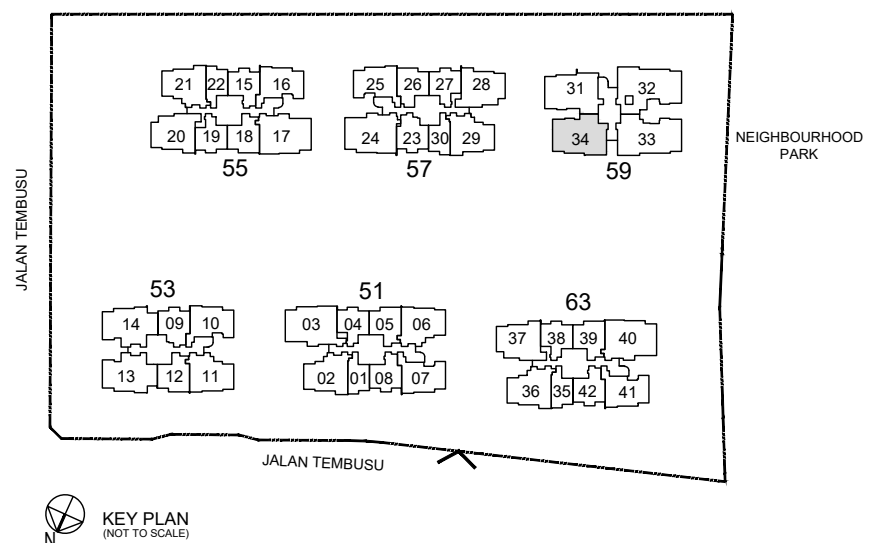
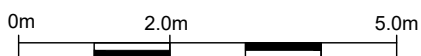
121 sqm / 1302 sqft

Inclusive of 10 sqm PES

Blk 59 #01-34



- F : Fridge
- W&D : Washer & Dryer
- O&S : Oven & Steamer
- C : Wine Chiller
- HS : Household Shelter
- DB/ST : Distribution Board / Storage
- RC Ledge : Reinforced Concrete Ledge (Non-Strata)
- AC Ledge : Air-Conditioner Ledge (Non-Strata)



Area includes balcony and Private Enclosed Space (PES) where applicable. All RC Ledges and AC Ledges are excluded from strata area and are non-load bearing. Some units are mirror images of the floor plans shown in the brochure. Orientations and facings will differ depending on the unit you are purchasing, please refer to the key plan. The above plans and illustrations are subject to changes as may be required or approved by the relevant authorities and do not form part of any offer or contract. Areas are estimates only and are subject to final survey. The balcony & PES shall not be enclosed unless with the approved balcony screen. For an illustration of the approved balcony screen, please refer to Annex A of this brochure.

# 4 Bedroom Luxe + Study

## TYPE D6LS

122 sqm / 1313 sqft

Inclusive of 10 sqm Balcony

Blk 59 #03-31 to #17-31

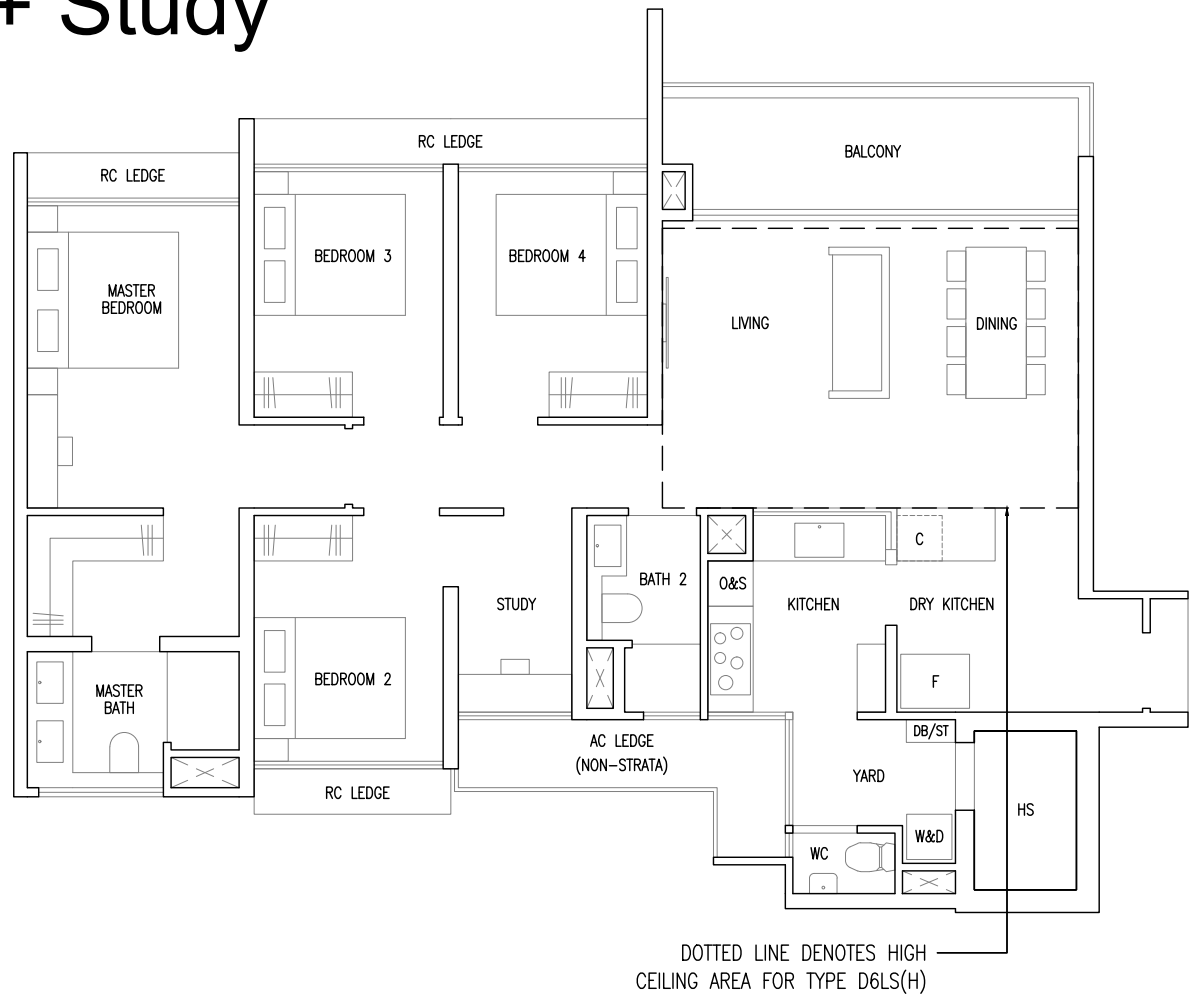
## TYPE D6LS(H)

122 sqm / 1313 sqft

Inclusive of 10 sqm Balcony

(High ceiling of 5 metres over living / dining)

Blk 59 #18-31

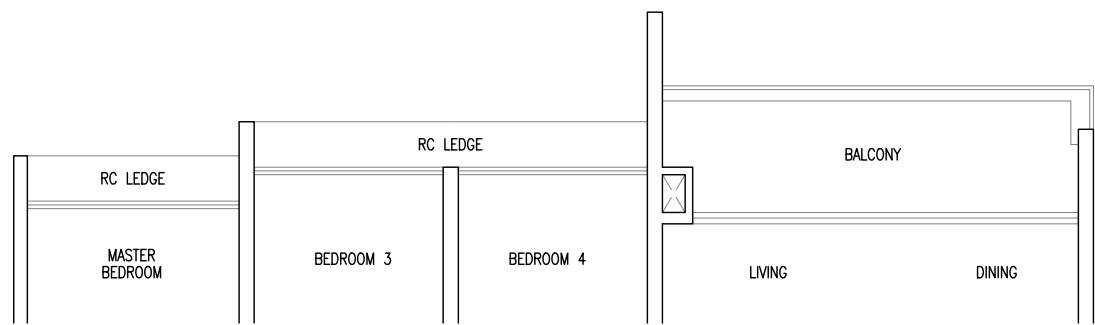


## TYPE D6LS

122 sqm / 1313 sqft

Inclusive of 10 sqm Balcony

Blk 59 #02-31

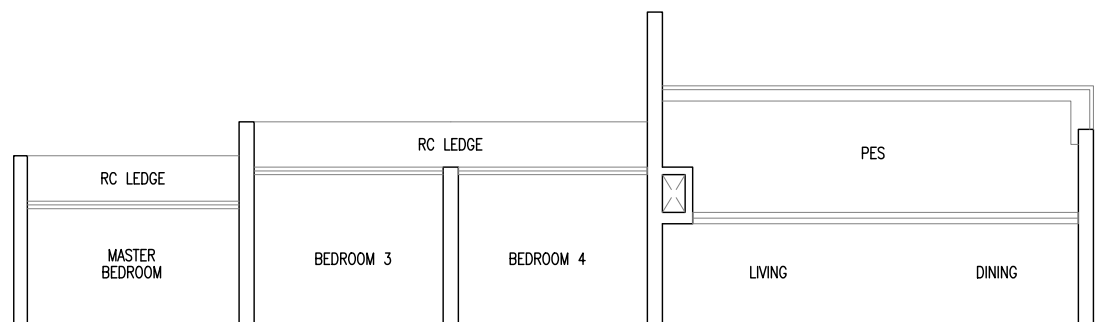


## TYPE D6LS(p)

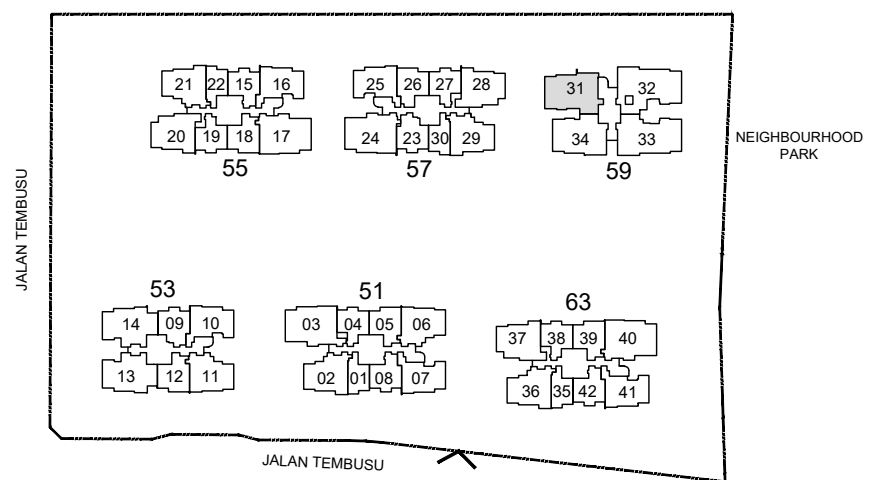
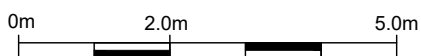
122 sqm / 1313 sqft

Inclusive of 10 sqm PES

Blk 59 #01-31



- F : Fridge
- W&D : Washer & Dryer
- O&S : Oven & Steamer
- C : Wine Chiller
- HS : Household Shelter
- DB/ST : Distribution Board / Storage
- RC Ledge : Reinforced Concrete Ledge (Non-Strata)
- AC Ledge : Air-Conditioner Ledge (Non-Strata)



KEY PLAN  
(NOT TO SCALE)

Area includes balcony and Private Enclosed Space (PES) where applicable. All RC Ledges and AC Ledges are excluded from strata area and are non-load bearing. Some units are mirror images of the floor plans shown in the brochure. Orientations and facings will differ depending on the unit you are purchasing, please refer to the key plan. The above plans and illustrations are subject to changes as may be required or approved by the relevant authorities and do not form part of any offer or contract. Areas are estimates only and are subject to final survey. The balcony & PES shall not be enclosed unless with the approved balcony screen. For an illustration of the approved balcony screen, please refer to Annex A of this brochure.

# 5 Bedroom Luxe

## TYPE E1L

137 sqm / 1475 sqft

Inclusive of 11 sqm Balcony

Blk 59 #02-33 to #17-33

## TYPE E1L(H)

137 sqm / 1475 sqft

Inclusive of 11 sqm Balcony

(High ceiling of 5 metres over living / dining)

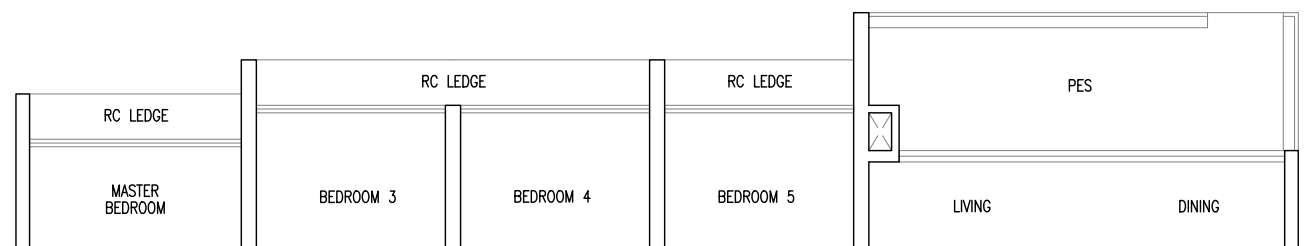
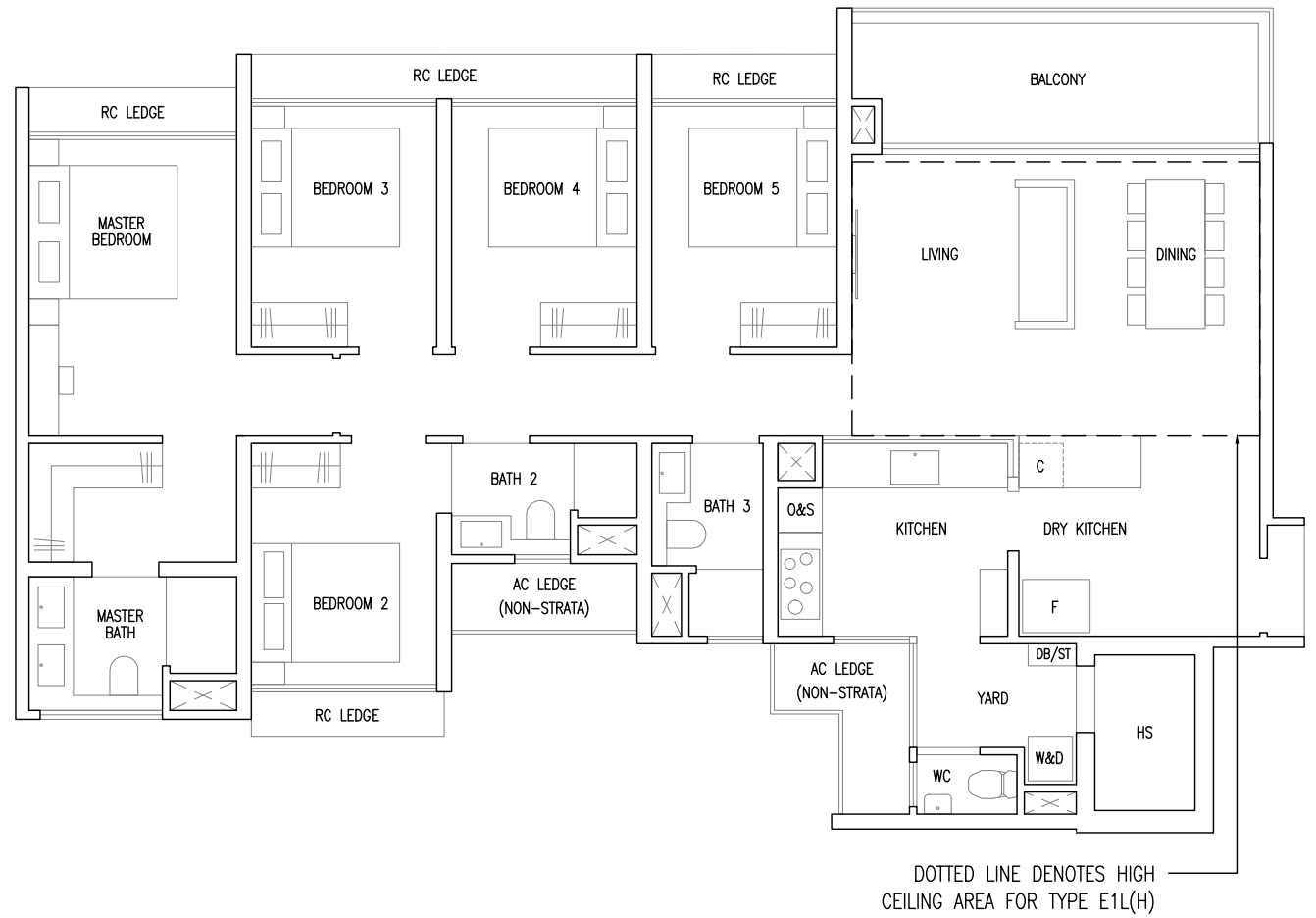
Blk 59 #18-33

## TYPE E1L(p)

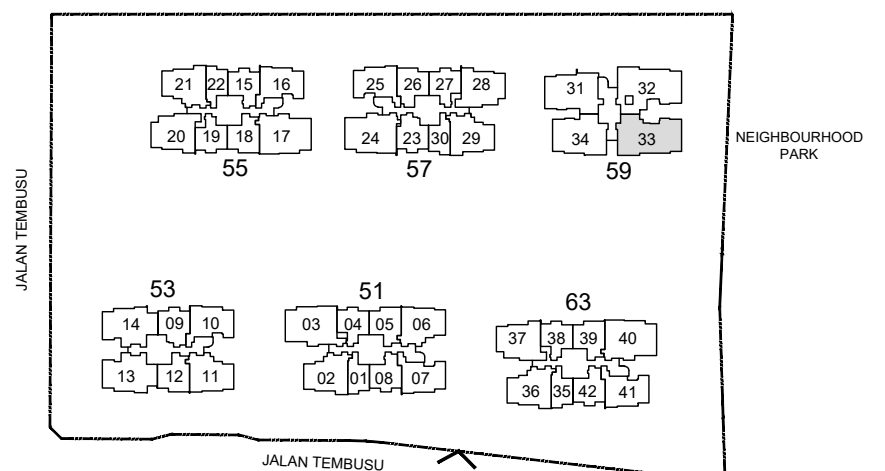
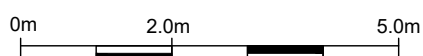
137 sqm / 1475 sqft

Inclusive of 11 sqm PES

Blk 59 #01-33



- F : Fridge
- W&D : Washer & Dryer
- O&S : Oven & Steamer
- C : Wine Chiller
- HS : Household Shelter
- DB/ST : Distribution Board / Storage
- RC Ledge : Reinforced Concrete Ledge (Non-Strata)
- AC Ledge : Air-Conditioner Ledge (Non-Strata)



KEY PLAN  
(NOT TO SCALE)

Area includes balcony and Private Enclosed Space (PES) where applicable. All RC Ledges and AC Ledges are excluded from strata area and are non-load bearing. Some units are mirror images of the floor plans shown in the brochure. Orientations and facings will differ depending on the unit you are purchasing, please refer to the key plan. The above plans and illustrations are subject to changes as may be required or approved by the relevant authorities and do not form part of any offer or contract. Areas are estimates only and are subject to final survey. The balcony & PES shall not be enclosed unless with the approved balcony screen. For an illustration of the approved balcony screen, please refer to Annex A of this brochure.

# 5 Bedroom Luxe

## TYPE E2L(p)

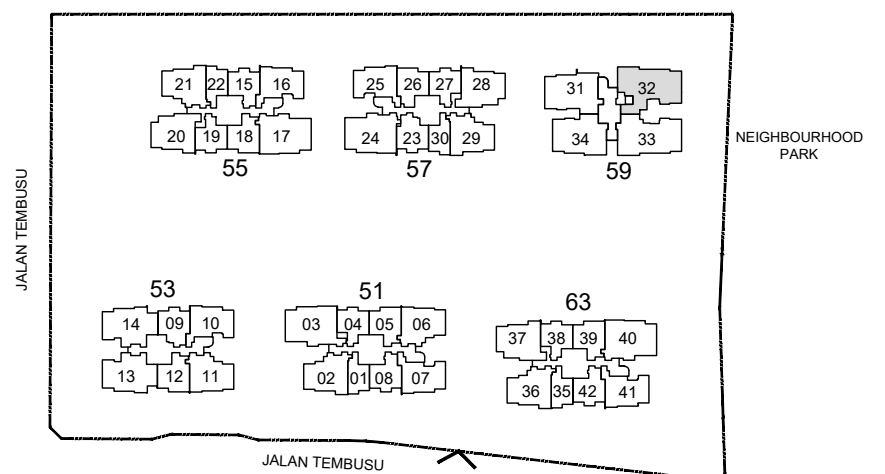
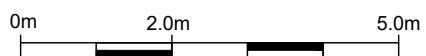
138 sqm / 1485 sqft

Inclusive of 11 sqm PES

Blk 59 #01-32



- F : Fridge
- W&D : Washer & Dryer
- O&S : Oven & Steamer
- C : Wine Chiller
- HS : Household Shelter
- DB/ST : Distribution Board / Storage
- RC Ledge : Reinforced Concrete Ledge (Non-Strata)
- AC Ledge : Air-Conditioner Ledge (Non-Strata)



KEY PLAN  
(NOT TO SCALE)

Area includes balcony and Private Enclosed Space (PES) where applicable. All RC Ledges and AC Ledges are excluded from strata area and are non-load bearing. Some units are mirror images of the floor plans shown in the brochure. Orientations and facings will differ depending on the unit you are purchasing, please refer to the key plan. The above plans and illustrations are subject to changes as may be required or approved by the relevant authorities and do not form part of any offer or contract. Areas are estimates only and are subject to final survey. The balcony & PES shall not be enclosed unless with the approved balcony screen. For an illustration of the approved balcony screen, please refer to Annex A of this brochure.

# 5 Bedroom Luxe

## TYPE E3L

145 sqm / 1561 sqft

Inclusive of 11 sqm Balcony

Blk 59 #02-32 to #17-32

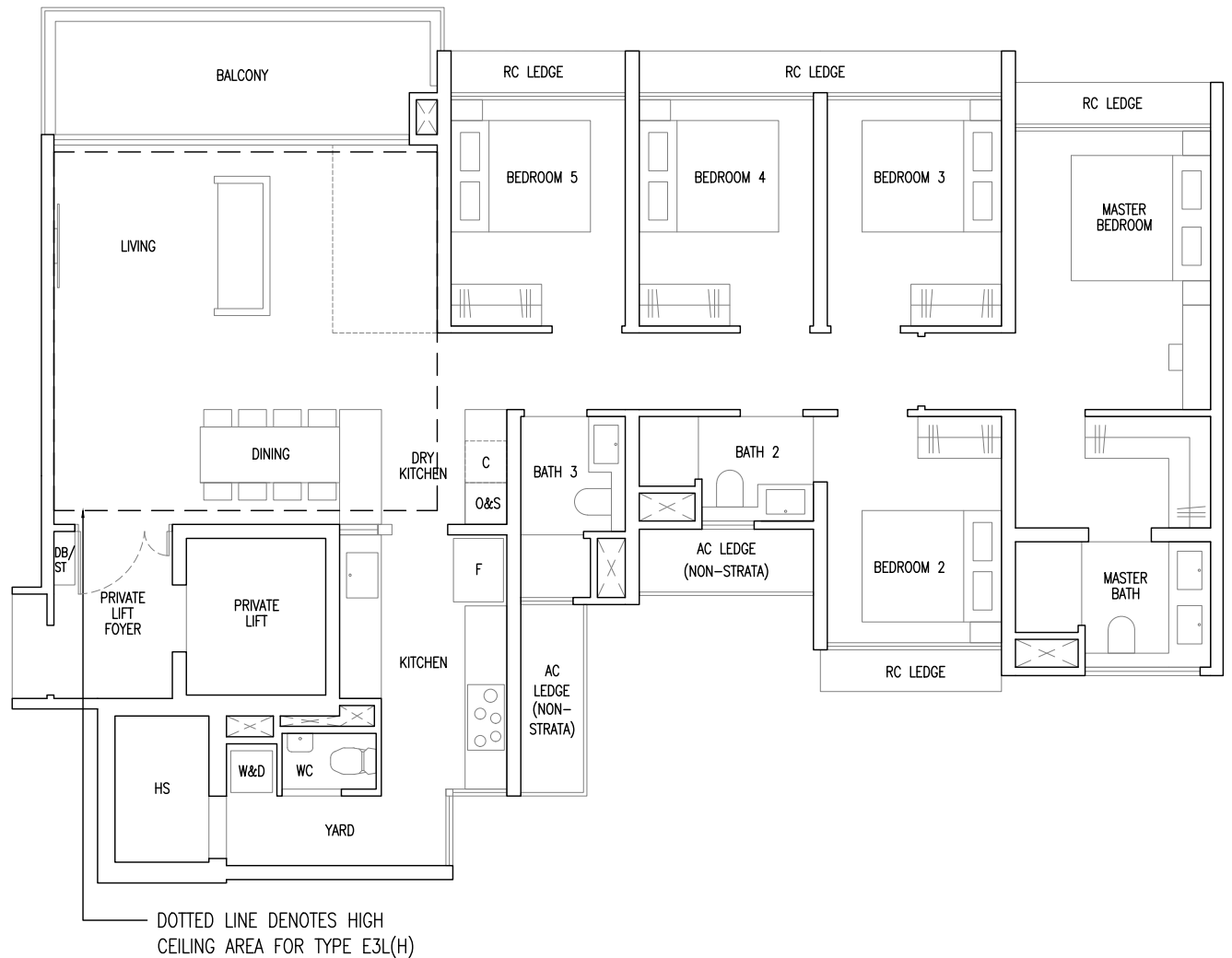
## TYPE E3L(H)

145 sqm / 1561 sqft

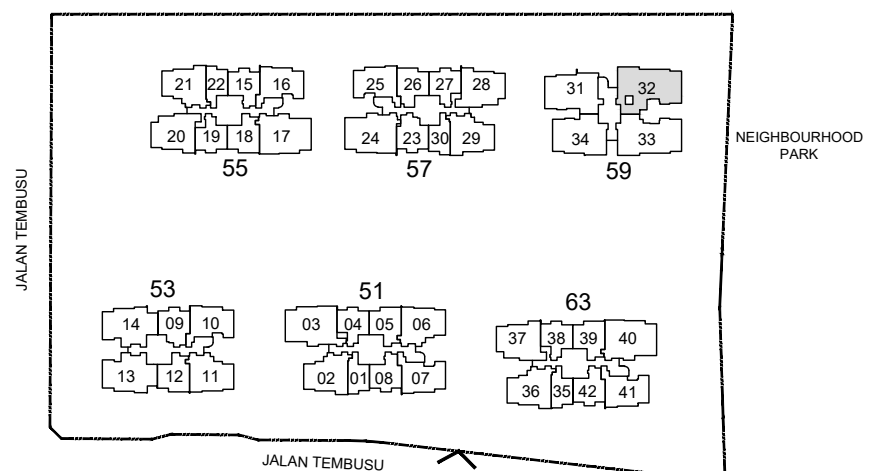
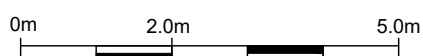
Inclusive of 11 sqm Balcony

(High ceiling of 5 metres over living / dining)

Blk 59 #18-32



- F : Fridge
- W&D : Washer & Dryer
- O&S : Oven & Steamer
- C : Wine Chiller
- HS : Household Shelter
- DB/ST : Distribution Board / Storage
- RC Ledge : Reinforced Concrete Ledge (Non-Strata)
- AC Ledge : Air-Conditioner Ledge (Non-Strata)



Area includes balcony and Private Enclosed Space (PES) where applicable. All RC Ledges and AC Ledges are excluded from strata area and are non-load bearing. Some units are mirror images of the floor plans shown in the brochure. Orientations and facings will differ depending on the unit you are purchasing, please refer to the key plan. The above plans and illustrations are subject to changes as may be required or approved by the relevant authorities and do not form part of any offer or contract. Areas are estimates only and are subject to final survey. The balcony & PES shall not be enclosed unless with the approved balcony screen. For an illustration of the approved balcony screen, please refer to Annex A of this brochure.